




ELECTRONICS

**Samsung Secret**

Product Information

**DATE : 28. Jul. 2010****SAMSUNG TFT-LCD****MODEL : LTA460HM04**

The Information Described in this Specification is Preliminary and can be changed without prior notice

APPROVAED BY 	DATE 28. Jul, 2010	PREPARED BY Jeong-Geun Han	DATE 28. Jul, 2010
---	-----------------------	-------------------------------	-----------------------

LCD Business

Samsung Electronics Co . , LTD.

<b>MODEL</b>	<b>LTA460HM04</b>	<b>Doc. No</b>	<b>06- 000- G- 100728</b>	<b>Page</b>	<b>1/25</b>
--------------	-------------------	----------------	---------------------------	-------------	-------------

**Contents****Samsung Secret**

General Description .....	(3)
General Information .....	(3)
1. Absolute Maximum Ratings .....	(4)
2. Optical Characteristics .....	(5)
3. Electrical Characteristics .....	(8)
3.1 TFT LCD Module	
3.2 Back Light Unit	
3.3 Inverter Input & Specification	
4. Input Terminal Pin Assignment .....	(11)
4.1 Input Signal & Power	
4.2 Inverter Input Pin Configuration	
4.3 Inverter Input Power Sequence	
4.4 LVDS Interface	
4.5 Input Signals, Basic Display Colors and Gray Scale of Each Color	
5. Interface Timing .....	(16)
5.1 Timing Parameters (DE mode)	
5.2 Spread Spectrum	
5.3 LVDS Input Data Position	
5.4 Timing diagrams of interface signal	
5.5 Power ON/OFF Sequence	
6. Outline Dimension .....	(19)
7. Packing .....	(21)
8. Marking & Others .....	(22)
9. General Precaution .....	(23)
9.1 Handling	
9.2 Storage	
9.3 Operation	
9.4 Operation Condition Guide	
9.5 Others	

**MODEL****LTA460HM04****Doc. No****06- 000- G- 100728****Page****2/25**

## General Description

**Samsung Secret**

### Description

**LTA460HM04** is a color active matrix liquid crystal display (LCD) that uses amorphous silicon TFT(Thin Film Transistor) as switching components. This model is composed of a TFT LCD panel, a driver circuit and a back light unit. The resolution of a 46.0" is 1920 x 1080 and this model can display up to 16.7 Billion colors with wide viewing angle of 89° or higher in all directions. This panel is intended to support applications to provide a excellent performance for Flat Panel Display such as Home-alone Multimedia TFT-LCD TV and High Definition TV

### Features

- RoHS compliance (Pb-free)
- High contrast ratio & aperture ratio with wide color gamut
- SPVA(Super Patterned Vertical Align) mode
- Wide viewing angle ( $\pm 178^\circ$ )
- High speed response
- FHD resolution (16:9)
- Low Power consumption
- Edge Type LED (Light Emitted Diode) BLU
- DE (Data Enable) mode
- 2ch LVDS (Low Voltage Differential Signaling) interface (2pixel/clock)

## General Information

Items	Specification	Unit	Note
Module Size	1076.5 (H <sub>TYP</sub> ) x 634.7 (V <sub>TYP</sub> )	mm	$\pm 1.0\text{mm}$
	30.9 (Max.)		
Weight	12,200 (Max.)	g	
Pixel Pitch	0.530 (H) x 0.530 (W)	mm	
Active Display Area	1018.08 (H) x 572.67 (V)	mm	
Surface Treatment	Haze 7%, Anti-glare		
Display Colors	8bit – 16.7M	colors	
Number of Pixels	1920 x 1080	pixel	
Pixel Arrangement	RGB vertical stripe		
Display Mode	Normally Black		
Luminance of White	430 (Typ.)	cd/m <sup>2</sup>	

**MODEL****LTA460HM04****Doc. No****06- 000- G- 100728****Page****3/25**

**Samsung Secret**

## 1. Absolute Maximum Ratings

If the condition exceeds maximum ratings, it can cause malfunction or unrecoverable damage to the device.

Item	Symbol	Min.	Max.	Unit	Note
Power Supply Voltage	$V_{DD}$	GND-0.5	13.2	V	(1)
Dimming Control	Max. Lum	-	5	V	
Storage temperature	$T_{STG}$	-20	60	°C	(2)
Operating temperature	$T_{OPR}$	0	50	°C	
Surface temperature	$T_{SUR}$	0	60	°C	(3)
Shock ( non - operating )	$S_{nop}$	X, Y	-	G	(3)
		Z	-		
Vibration ( non - operating )	$V_{NOP}$	-	1.5	G	(5)

Note (1)  $T_a = 25 \pm 2$  °C

(2) Temperature and relative humidity range are shown in the figure below.

a. 90 % RH Max. ( $T_a \leq 39$  °C)

b. Relative Humidity is 90% or less. ( $T_a > 39$  °C)

c. No condensation

(3) Although abnormal visual problems can be occurred in  $T_{SUR}$  range, the polarizer is not damaged in this range.

(4) 11ms, sine wave, one time for  $\pm X, \pm Y, \pm Z$  axis

(5) 10-300 Hz, Sweep rate 10min, 30min for X,Y,Z axis

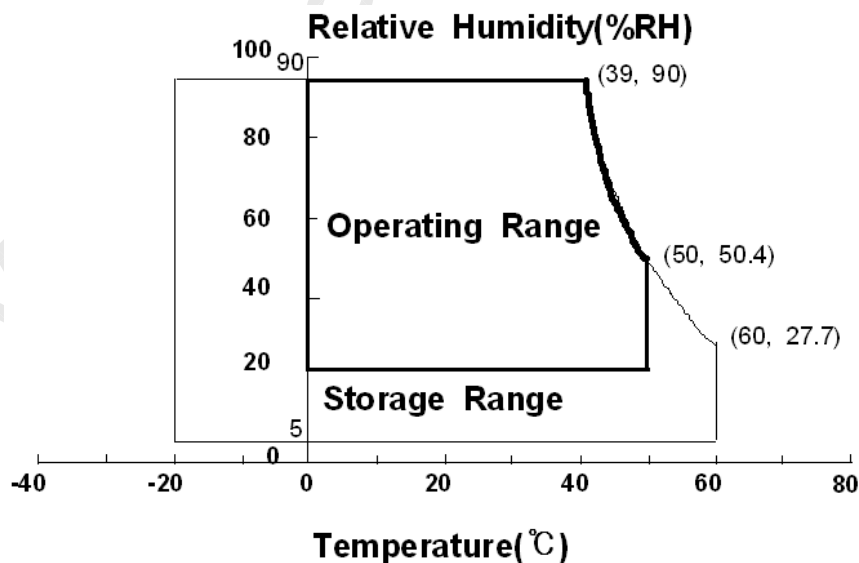


Fig. Temperature and Relative humidity range

**MODEL**

**LTA460HM04**

**Doc. No**

**06- 000- G- 100728**

**Page**

**4/25**

## 2. Optical Characteristics

**Samsung Secret**

The optical characteristics should be measured in a dark room or equivalent.

Measuring equipment : TOPCON RD-80S, TOPCON SR-3, ELDIM EZ-Contrast

(Ta = 25 ± 2 °C, VDD=12V, fv= 60Hz, f<sub>DCLK</sub> = 148.5MHz, Duty = Max)

Item		Symbol	Condition	Min.	Typ.	Max.	Unit	Note
Contrast Ratio (Center of screen)		C/R		TBD	4000	-		(1) SR-3
Response Time	G-to-G	Tg	Normal q <b>L,R</b> =0 q <b>U,D</b> =0  Viewing Angle	-	8	-	msec	(3) RD-80S
Luminance of White (Center of screen)		Y <sub>L</sub>		TBD	430	-	cd/m <sup>2</sup>	(4) SR-3
Color Chromaticity (CIE 1931)	Red	Rx		TYP. -0.03	TBD	TYP. +0.03		(5),(6) SR-3
		Ry			TBD			
	Green	Gx			TBD			
		Gy			TBD			
	Blue	Bx			TBD			
		By			TBD			
	White	Wx			0.280			
		Wy			0.290			
Color Gamut		-	-	72	-	%	(5) SR-3	
Color Temperature		-	-	10,000	-	K		
Viewing Angle	Hor.	q <sub>L</sub>	C/R≥ 10	75	89	-	Degree	(6) EZ-Contrast
		q <sub>R</sub>		75	89	-		
	Ver.	q <sub>U</sub>		75	89	-		
		q <sub>D</sub>		75	89	-		
White Brightness Uniformity (9 Points)		B <sub>uni</sub>		-	-	25	%	(2) SR-3

### - Test Equipment Setup

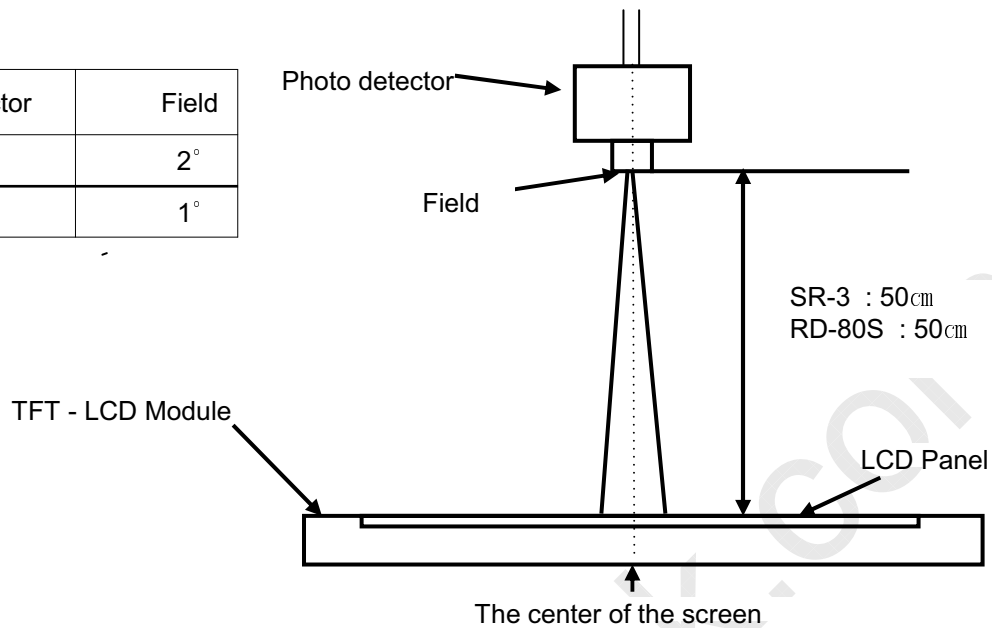
The measurement should be executed in a stable, windless and dark room between 40min and 60min after lighting the back light at the given temperature for stabilization of the back light. This should be measured in the center of screen.

Environment condition : Ta = 25 ± 2 °C

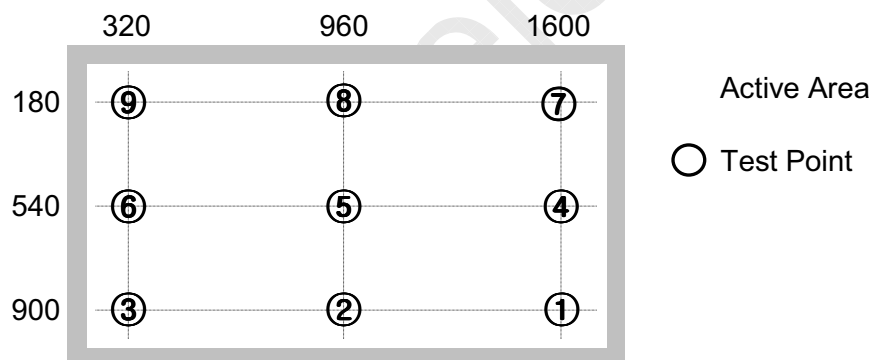
**MODEL**
**LTA460HM04**
**Doc. No**
**06- 000- G- 100728**
**Page**
**5/25**

**Samsung Secret**

Photo detector	Field
SR-3	2°
RD-80S	1°



#### - Definition of test point



#### Note (1) Definition of Contrast Ratio (C/R)

: Ratio of gray max (Gmax) & gray min (Gmin) at the center point ⑤ of the panel

$$C/R = \frac{G_{\max}}{G_{\min}}$$

Gmax : Luminance with all pixels white

Gmin : Luminance with all pixels black

**MODEL****LTA460HM04****Doc. No****06- 000- G- 100728****Page****6/25**

**Samsung Secret**

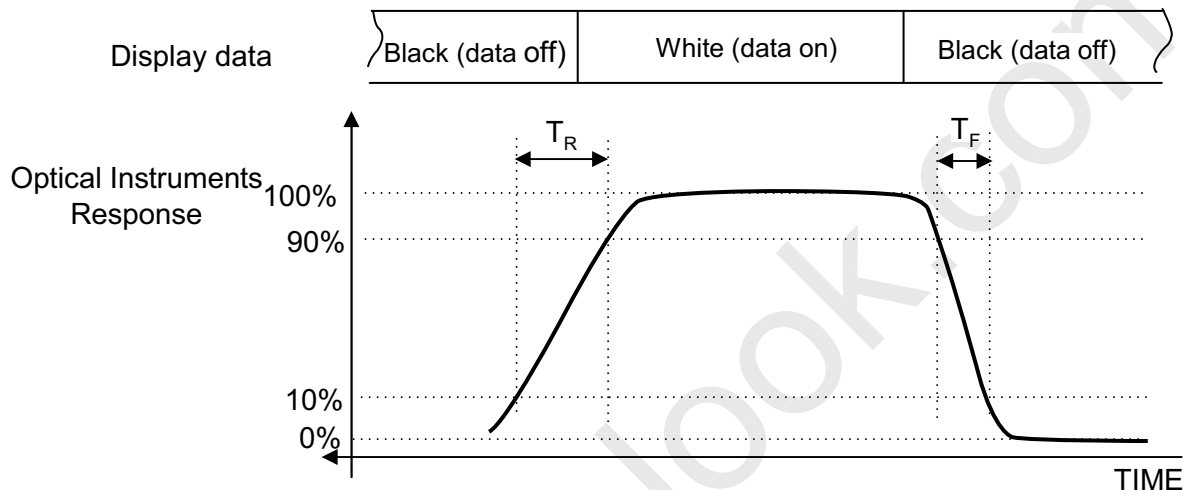
Note (2) Definition of 9 points brightness uniformity (Test pattern : Full White )

$$B_{uni} = 100 * \frac{(B_{max} - B_{min})}{B_{max}}$$

Bmax : Maximum brightness

Bmin : Minimum brightness

Note (3) Definition of Response time : Sum of Tr, Tf



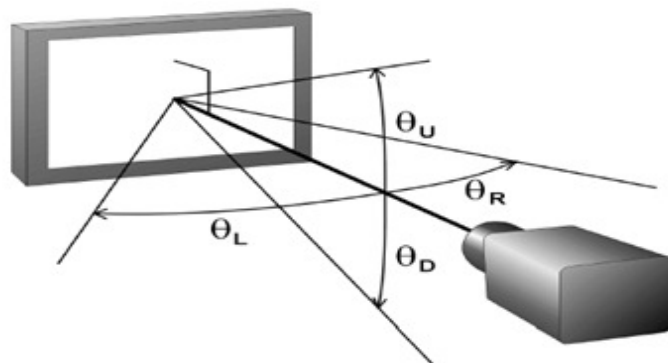
Note (4) Definition of Luminance of White : Luminance of white at center point ⑤

Note (5) Definition of Color Chromaticity (CIE 1931)

Color coordinate of Red, Green, Blue & White at center point ⑤

Note (6) Definition of Viewing Angle

: Viewing angle range ( $C/R \geq 10$ )

**MODEL****LTA460HM04****Doc. No****06- 000- G- 100728****Page****7/25**

### 3. Electrical Characteristics

**Samsung Secret**

#### 3.1 TFT LCD Module

The connector for display data & timing signal should be connected.

$T_a = 25^{\circ}\text{C} \pm 2^{\circ}\text{C}$

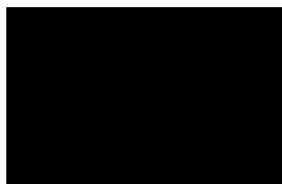
Item		Symbol	Min.	Typ.	Max.	Unit	Note
Voltage of Power Supply		V <sub>DD</sub>	10.8	12.0	13.2	V	(1)
Current of Power Supply	(a) Black	I <sub>DD</sub>	-	720	950	mA	(2),(3)
	(b) White		-	1280	1500	mA	
	(c) N-Pattern		-	1280	1500	mA	
Vsync Frequency		f <sub>V</sub>	48.0	60.0	62.0	Hz	
Hsync Frequency		f <sub>H</sub>	50.0	67.5	75.0	kHz	
Main Frequency		f <sub>DCLK</sub>	130.0	148.5	155.0	MHz	
Rush Current		I <sub>RUSH</sub>	-	-	4.5	A	(4)

Note (1) The ripple voltage should be controlled under 10% of  $V_{DD}$ .

(2)  $f_V=60\text{Hz}$ ,  $f_{DCLK} = 148.5\text{MHz}$ ,  $V_{DD} = 12.0\text{V}$ , DC Current.

(3) Power dissipation check pattern (LCD Module only)

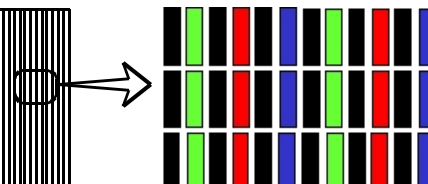
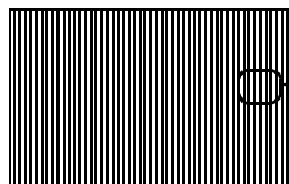
a) Black Pattern



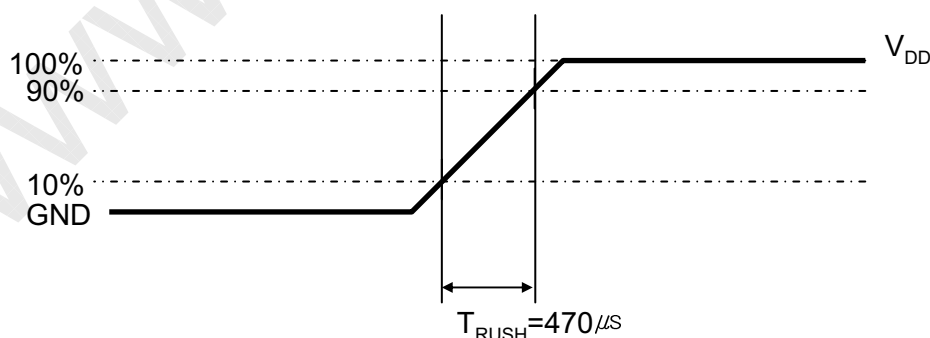
b) White Pattern



c) N-Pattern



(4) Measurement Conditions



Rush Current  $I_{RUSH}$  can be measured when  $T_{RUSH}$  is  $470\mu\text{s}$ .

**MODEL**

**LTA460HM04**

**Doc. No**

**06- 000- G- 100728**

**Page**

**8/25**

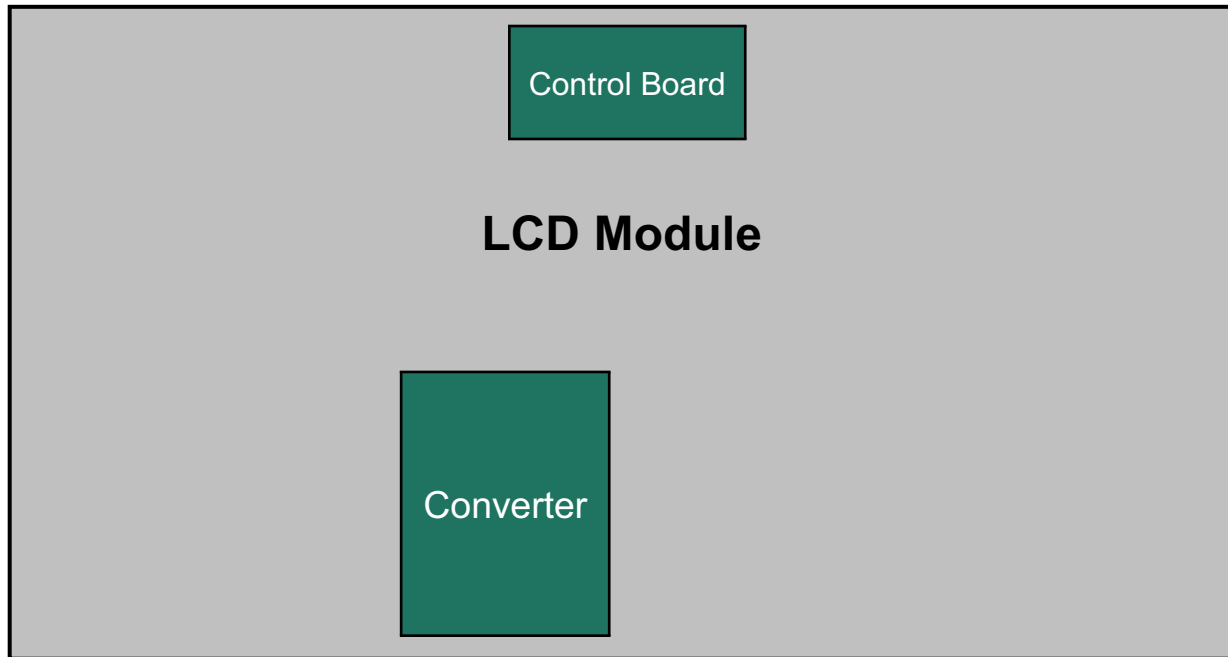


**Samsung Secret**

### 3.2 Back Light Unit

The back light unit contains Edge type White LEDs (Light Emitting Diode)

$T_a = 25 \pm 2^\circ\text{C}$



Item	Symbol	Min.	Typ.	Max.	Unit	Note
Operating Life Time	Hr	-	30,000	-	Hour	(1)

Note (1) It is defined as the time to take until the brightness reduces to 50% of its original value.

[Operating condition :  $T_a = 25 \pm 2^\circ\text{C}$ ]

**MODEL****LTA460HM04****Doc. No****06- 000- G- 100728****Page****9/25**

## 3.3 Inverter Input Condition &amp; Specification

**Samsung Secret**

Items	Symbol	Conditions	Specifications			Unit	Note
			Min.	Typ.	Max.		
Input Voltage	V <sub>in</sub>	-	22	24	26	V	Ta=25± 2 °C (3)
Input Current	I <sub>RUSH</sub>	V <sub>in</sub> =24.0V V <sub>dim</sub> =3.3V	-	-	4.1	A	(1)
LED Current	I <sub>O,MAX</sub>	V <sub>dim</sub> =3.3 V	125	130	135	mArms	(2)
Backlight On/Off	ON	V <sub>in</sub> =24.0 V	2.4	-	5.25	V	(3)
	OFF	V <sub>in</sub> =24.0 V	0	-	0.8		
Dimming Control	V <sub>DIM</sub>	Max Lum	3.3	-	-	V	(3)
		Min. Lum	-	-	0		

Note) Power Consumption is measured when 430 [cd/m ] of luminance which is the typical luminance.

Lamp Current is measured at the point before Lamp.

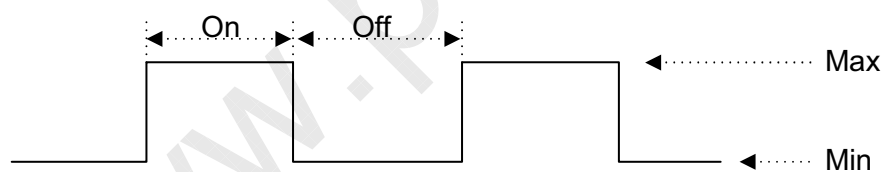
(1) Max Value of the Power Consumption is measured during initial turn on time\* of the backlight

(2) Max Value of the Power Consumption is measured after 60 min warm-up.

(3) The ripple voltage should be controlled under 10% of Input Signal

(4) Duty = On/(On+Off) \* 100

\* Initial turn-on time : From 0sec to 60min after turn-on

**MODEL****LTA460HM04****Doc. No****06- 000- G- 100728****Page****10/25**

## 4. Input Terminal Pin Assignment

**Samsung Secret**

### 4.1 Input Signal & Power

Connector : FI-RE51S-HF (JAE/UJU)

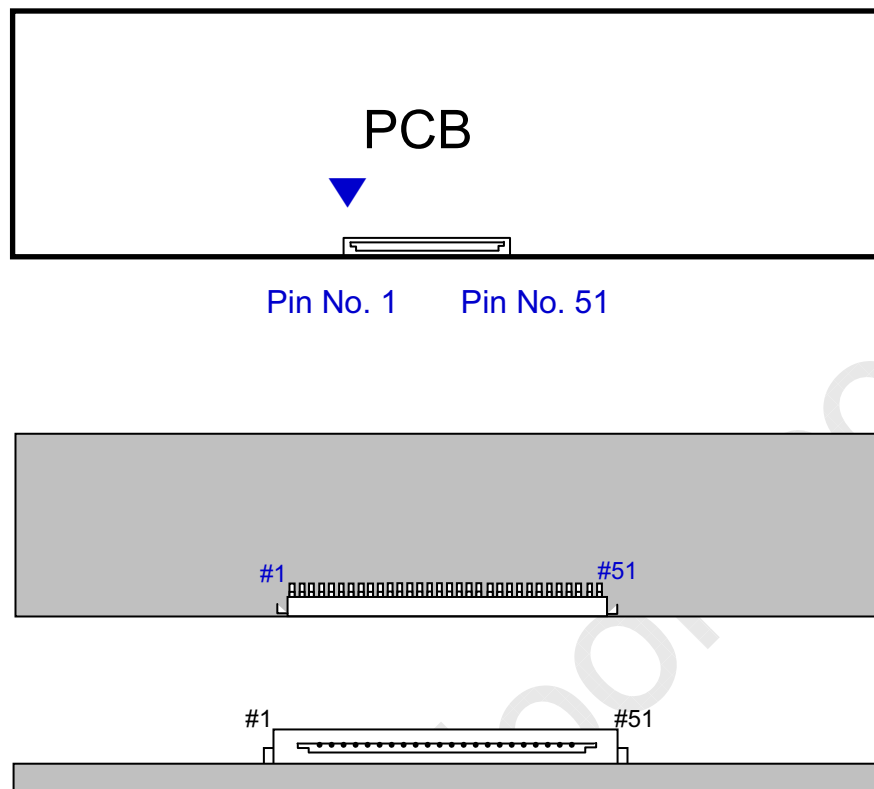
Pin	Description		Pin	Description	
1	Vdd(12V)		26	EVEN LVDS SIGNAL	RxE[0]P
2	Vdd(12V)		27		RxE[1]N
3	Vdd(12V)		28		RxE[1]P
4	Vdd(12V)		29		RxE[2]N
5	Vdd(12V)		30		RxE[2]P
6	No Connection *Note (1)		31		GND
7	GND		32		RxECLK-
8	GND		33		RxECLK+
9	GND		34		GND
10	ODD LVDS SIGNAL	RxO[0]N	35		RxE[3]N
11		RxO[0]P	36		RxE[3]P
12		RxO[1]N	37		No Connection
13		RxO[1]P	38		No Connection
14		RxO[2]N	39	GND	
15		RxO[2]P	40	No Connection	
16		GND	41	No Connection	
17		RxOCLK-	42	No Connection	
18		RxOCLK+	43	No Connection	
19		GND	44	No Connection	
20		RxO[3]N	45	LVDS Option * Note(2)	
21		RxO[3]P	46	No Connection	
22		No Connection	47	No Connection	
23		No Connection	48	No Connection	
24		GND	49	No Connection	
25		RxE[0]N	50	No Connection	
			51	No Connection	

Note (1) No Connection: This PINS are only used for SAMSUNG internal using.

**MODEL**
**LTA460HM04**
**Doc. No**
**06- 000- G- 100728**
**Page**
**11/25**

Note) Pin number starts from Right side

**Samsung Secret**

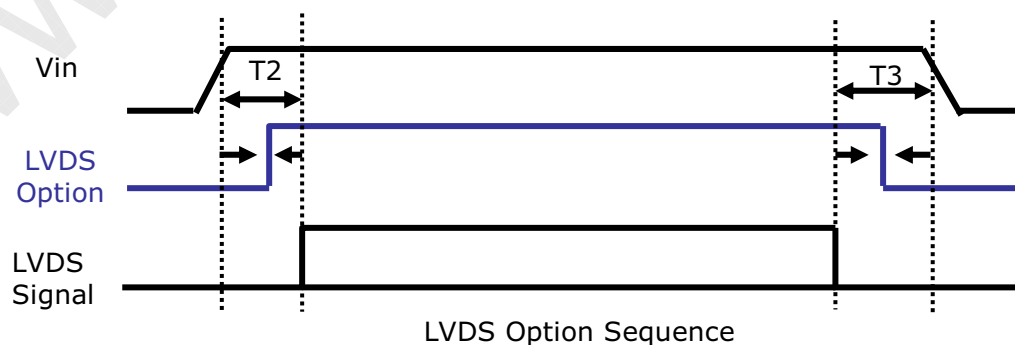


**Fig. Connector diagram**

- a. All GND pins should be connected together and also be connected to the LCD's metal chassis.
- b. All power input pins should be connected together.
- c. All NC pins should be separated from other signal or power.

Note(2) LVDS OPTION : If this PIN HIGH ( 3.3V ) → Normal LVDS format  
 LOW ( GND ) → JEIDA LVDS format

SEQUENCE : On = VDD(T1) → LVDS Option → Interface Signal(T2)  
 OFF = Interface Signal(T3) → LVDS Option → VDD



**MODEL**

**LTA460HM04**

**Doc. No**

**06- 000- G- 100728**

**Page**

**12/25**

## 4.2. Inverter Input Pin Configuration

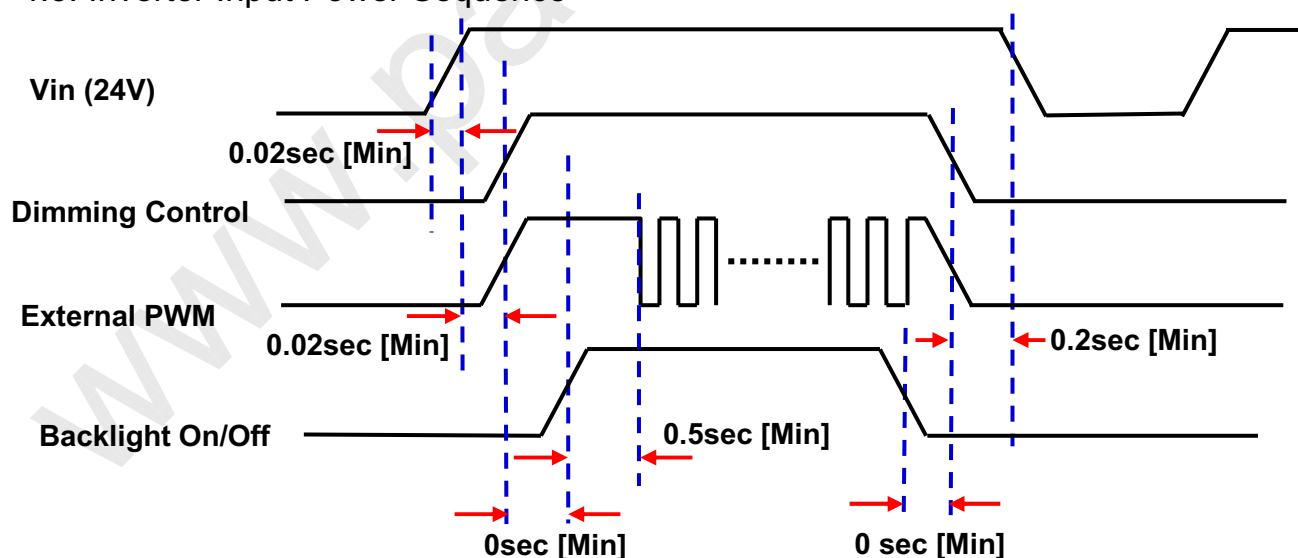
**Samsung Secret**

Connector : Yeon-ho, 20022WR-14B1

Pin No.	Pin Configuration (FUNCTION)
	Master
1	24 V
2	24 V
3	24 V
4	24 V
5	24 V
6	GND
7	GND
8	GND
9	GND
10	GND
11	No Connection * Note (1)
12	Backlight On /Off [ON:2.4 – 5.25 V, OFF: 0 - 0.8 V]
13	Dimming Control [0V:Min, 3.3V:Max]
14	No Connection

Note(1) No connection : This Pins are only used for SAMSUNG internal using

## 4.3. Inverter Input Power Sequence



Note) SEQUENCE : On = Vin(24V) > Internal or External PWN ≥ Backlight On/off  
 OFF = Backlight On/Off ≥ Internal or External PWN > Vin(24V)

**MODEL**
**LTA460HM04**
**Doc. No**
**06- 000- G- 100728**
**Page**
**13/25**

## 4.4 LVDS Interface

**Samsung Secret**

- LVDS Receiver : Tcon (merged)
- Data Format (JEIDA & Normal)

	LVDS pin	JEIDA -DATA	Normal -DATA
TxOUT/RxIN0	TxIN/RxOUT0	R2	R0
	TxIN/RxOUT1	R3	R1
	TxIN/RxOUT2	R4	R2
	TxIN/RxOUT3	R5	R3
	TxIN/RxOUT4	R6	R4
	TxIN/RxOUT6	R7	R5
	TxIN/RxOUT7	G2	G0
TxOUT/RxIN1	TxIN/RxOUT8	G3	G1
	TxIN/RxOUT9	G4	G2
	TxIN/RxOUT12	G5	G3
	TxIN/RxOUT13	G6	G4
	TxIN/RxOUT14	G7	G5
	TxIN/RxOUT15	B2	B0
	TxIN/RxOUT18	B3	B1
TxOUT/RxIN2	TxIN/RxOUT19	B4	B2
	TxIN/RxOUT20	B5	B3
	TxIN/RxOUT21	B6	B4
	TxIN/RxOUT22	B7	B5
	TxIN/RxOUT24	HSYNC	HSYNC
	TxIN/RxOUT25	VSYNC	VSYNC
	TxIN/RxOUT26	DEN	DEN
TxOUT/RxIN3	TxIN/RxOUT27	R0	R6
	TxIN/RxOUT5	R1	R7
	TxIN/RxOUT10	G0	G6
	TxIN/RxOUT11	G1	G7
	TxIN/RxOUT16	B0	B6
	TxIN/RxOUT17	B1	B7
	TxIN/RxOUT23	RESERVED	RESERVED

**MODEL****LTA460HM04****Doc. No****06- 000- G- 100728****Page****14/25**

**Samsung Secret**

## 4.5 Input Signals, Basic Display Colors and Gray Scale of Each Color

COLOR	DISPLAY (8bit)	DATA SIGNAL																										GRAY SCALE LEVEL
		RED								GREEN								BLUE										
		R0	R1	R2	R3	R4	R5	R6	R7	G0	G1	G2	G3	G4	G5	G6	G7	B0	B1	B2	B3	B4	B5	B6	B7			
BASIC COLOR	BLACK	0	0	0	0	0	0	0	0	0	0	0	0	0	0	0	0	0	0	0	0	0	0	0	0	0	-	
	BLUE	0	0	0	0	0	0	0	0	0	0	0	0	0	0	0	0	1	1	1	1	1	1	1	1	1	-	
	GREEN	0	0	0	0	0	0	0	0	1	1	1	1	1	1	1	1	0	0	0	0	0	0	0	0	0	-	
	CYAN	0	0	0	0	0	0	0	0	1	1	1	1	1	1	1	1	1	1	1	1	1	1	1	1	1	-	
	RED	1	1	1	1	1	1	1	1	0	0	0	0	0	0	0	0	0	0	0	0	0	0	0	0	0	-	
	MAGENTA	1	1	1	1	1	1	1	1	0	0	0	0	0	0	0	0	1	1	1	1	1	1	1	1	1	-	
	YELLOW	1	1	1	1	1	1	1	1	1	1	1	1	1	1	1	1	0	0	0	0	0	0	0	0	0	-	
	WHITE	1	1	1	1	1	1	1	1	1	1	1	1	1	1	1	1	1	1	1	1	1	1	1	1	1	-	
GRAY SCALE OF RED	BLACK	0	0	0	0	0	0	0	0	0	0	0	0	0	0	0	0	0	0	0	0	0	0	0	0	0	R0	
	DARK ↑	1	0	0	0	0	0	0	0	0	0	0	0	0	0	0	0	0	0	0	0	0	0	0	0	0	R1	
		0	1	0	0	0	0	0	0	0	0	0	0	0	0	0	0	0	0	0	0	0	0	0	0	0	R2	
		:	:	:	:	:	:	:	:	:	:	:	:	:	:	:	:	:	:	:	:	:	:	:	:	:	R3~ R252	
		:	:	:	:	:	:	:	:	:	:	:	:	:	:	:	:	:	:	:	:	:	:	:	:	:		
	↓ LIGHT	1	0	1	1	1	1	1	1	0	0	0	0	0	0	0	0	0	0	0	0	0	0	0	0	0	R252	
		0	1	1	1	1	1	1	1	0	0	0	0	0	0	0	0	0	0	0	0	0	0	0	0	0	R252	
	RED	1	1	1	1	1	1	1	1	0	0	0	0	0	0	0	0	0	0	0	0	0	0	0	0	0	R252	
GRAY SCALE OF GREEN	BLACK	0	0	0	0	0	0	0	0	0	0	0	0	0	0	0	0	0	0	0	0	0	0	0	0	0	G0	
	DARK ↑	0	0	0	0	0	0	0	0	1	0	0	0	0	0	0	0	0	0	0	0	0	0	0	0	0	G1	
		0	0	0	0	0	0	0	0	0	1	0	0	0	0	0	0	0	0	0	0	0	0	0	0	0	G2	
		:	:	:	:	:	:	:	:	:	:	:	:	:	:	:	:	:	:	:	:	:	:	:	:	:	G3~ G252	
		:	:	:	:	:	:	:	:	:	:	:	:	:	:	:	:	:	:	:	:	:	:	:	:	:		
	↓ LIGHT	0	0	0	0	0	0	0	0	1	0	1	1	1	1	1	1	0	0	0	0	0	0	0	0	0	G252	
		0	0	0	0	0	0	0	0	0	1	1	1	1	1	1	1	0	0	0	0	0	0	0	0	0	G252	
	GREEN	0	0	0	0	0	0	0	0	1	1	1	1	1	1	1	1	0	0	0	0	0	0	0	0	0	G252	
GRAY SCALE OF BLUE	BLACK	0	0	0	0	0	0	0	0	0	0	0	0	0	0	0	0	0	0	0	0	0	0	0	0	0	B0	
	DARK ↑	0	0	0	0	0	0	0	0	0	0	0	0	0	0	0	0	1	0	0	0	0	0	0	0	0	B1	
		0	0	0	0	0	0	0	0	0	0	0	0	0	0	0	0	0	1	0	0	0	0	0	0	0	B2	
		:	:	:	:	:	:	:	:	:	:	:	:	:	:	:	:	:	:	:	:	:	:	:	:	:	B3~ B252	
		:	:	:	:	:	:	:	:	:	:	:	:	:	:	:	:	:	:	:	:	:	:	:	:	:		
	↓ LIGHT	0	0	0	0	0	0	0	0	0	0	0	0	0	0	0	0	1	0	1	1	1	1	1	1	1	B252	
		0	0	0	0	0	0	0	0	0	0	0	0	0	0	0	0	0	1	1	1	1	1	1	1	1	B252	
	BLUE	0	0	0	0	0	0	0	0	0	0	0	0	0	0	0	0	1	1	1	1	1	1	1	1	1	B252	

Note) Definition of Gray :

Rn : Red Gray, Gn : Green Gray, Bn : Blue Gray (n = Gray level)

Input Signal : 0 = Low level voltage, 1 = High level voltage

**MODEL****LTA460HM04****Doc. No****06- 000- G- 100728****Page****15/25**

**Samsung Secret**

## 5. Interface Timing

### 5.1 Timing Parameters ( DE mode )

SIGNAL	ITEM	SYMBOL	Min	Typ	Max	UNIT	NOTE
Clock	Frequency	1/TC	130.0	148.5	155.0	MHz	-
Hsync		Fh	50.0	67.5	75.0	KHz	(3)
Vsync		Fv	48.0	60.0	62.0	Hz	
Vertical Active Display Term	Display Period	TVD	-	1080	-	Lines	-
	Vertical Total	TV	1092	1125	1380	Lines	-
Horizontal Active Display Term	Display Period	THD	-	1920	-	Clocks	-
	Horizontal Total	TH	2092	2200	2348	Clocks	-

Note) This product is DE mode. The input of Hsync & Vsync signal must be inputted.

(1) Test Point : TTL control signal and CLK at LVDS Tx input terminal in system

(2) Internal  $V_{DD} = 3.3V$

(3) Hsync / Vsync is following VESA Standard

### 5.2 Spread Spectrum

- Modulation rate (max) :  $\pm 1.5 \%$

- Modulation Frequency : Under 100khz

### 5.3 LVDS Input Data Position (T-CON)

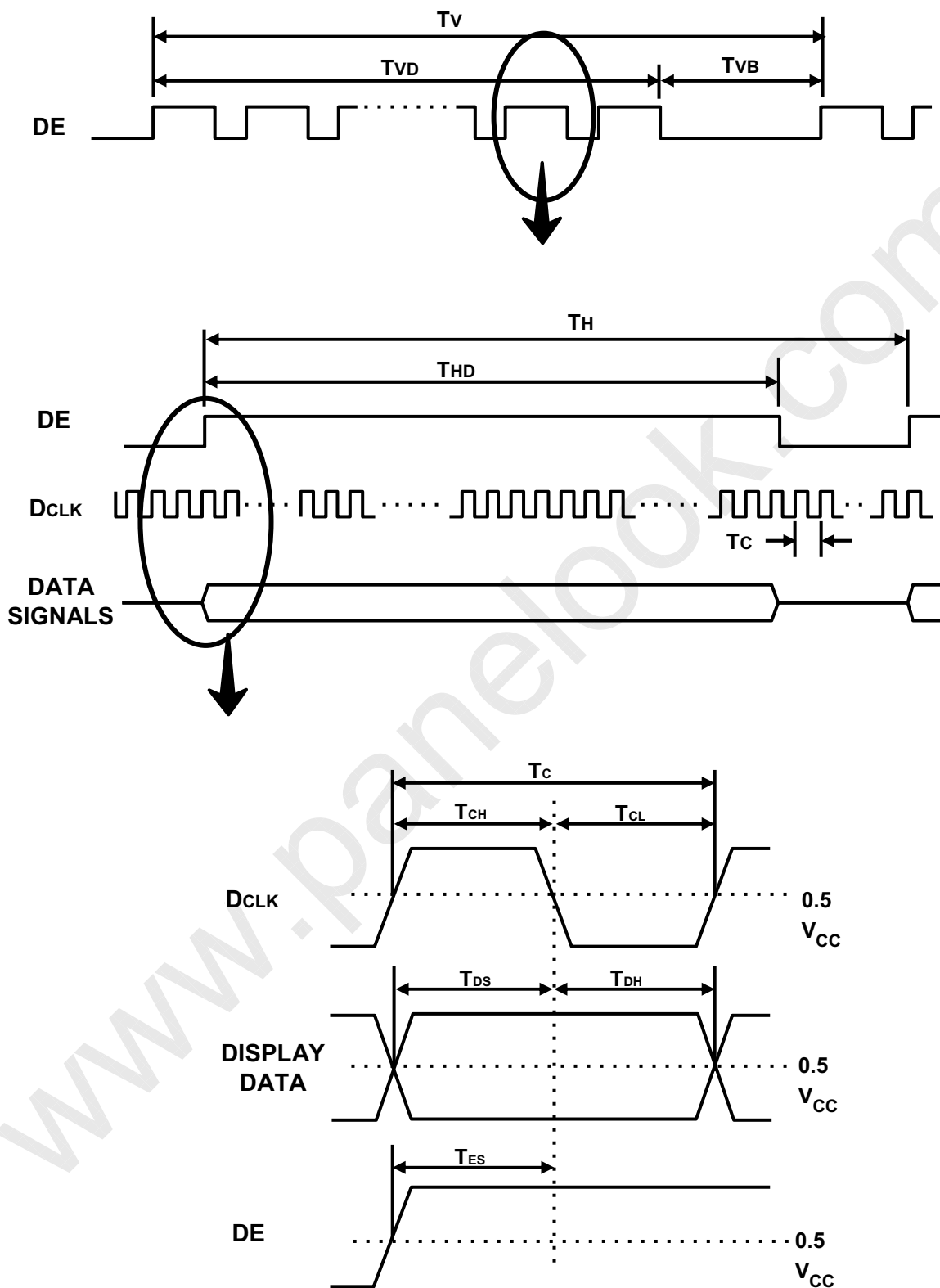
ITEM		SYMBOL	Min.	Typ.	Max.	UNIT	NOTE
Input Data Position	$F_{IN}=80MHz$	$t_{RSM}$	-	-	350	ps	-
	$F_{IN}=74MHz$		-	-	400	ps	
	$F_{IN}=72MHz$		-	-	400	ps	
Input Data Position	$F_{IN}=80MHz$	$t_{RSLM}$	-350	-	-	ps	
	$F_{IN}=74MHz$		-400	-	-	ps	
	$F_{IN}=72MHz$		-400	-	-	ps	
Input common mode voltage		$V_{CM}$	0.3	-	1.8	V	-
Differential Input Voltage		$ V_{ID} $	200	350	600	mV	-

Note) When the skew is measured the Spread Spectrum should be 0%

**MODEL****LTA460HM04****Doc. No****06- 000- G- 100728****Page****16/25**



**Samsung Secret**

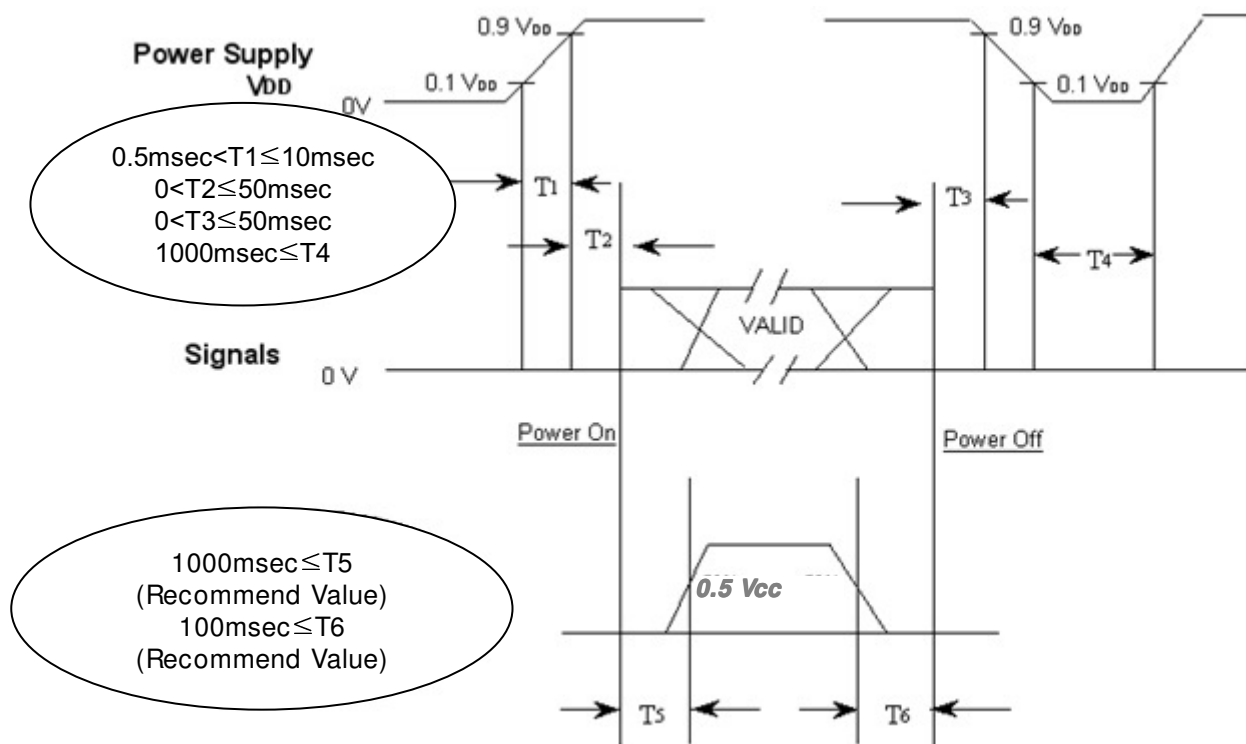


One step solution for LCD / PDP / OLED panel application: Datasheet, inventory and accessory! [www.panelook.com](http://www.panelook.com)

## 5.5 Power ON/OFF Sequence

**Samsung Secret**

To prevent a latch-up or DC operation of the LCD Module, the power on/off sequence should be as the diagram below.



T<sub>1</sub> : V<sub>DD</sub> rising time from 10% to 90%

T<sub>2</sub> : The time from V<sub>DD</sub> to valid data at power ON.

T<sub>3</sub> : The time from valid data off to V<sub>DD</sub> off at power Off.

T<sub>4</sub> : V<sub>DD</sub> off time for Windows restart

T<sub>5</sub> : The time from valid data to B/L enable at power ON.

T<sub>6</sub> : The time from valid data off to B/L disable at power Off.

- The supply voltage of the external system for the Module input should be the same as the definition of V<sub>DD</sub>.
- Apply the lamp voltage within the LCD operation range. When the back light turns on before the LCD operation or the LCD turns off before the back light turns off, the display may momentarily show abnormal screen.
- In case of V<sub>DD</sub> = off level, please keep the level of input signals low or keep a high impedance.
- T<sub>4</sub> should be measured after the Module has been fully discharged between power off and on period.
- Interface signal should not be kept at high impedance when the power is on.
- In Case T<sub>5</sub> is less than 1000msec and T<sub>6</sub> is less than 100msec, Garbage Display can be seen. (It is not related to electrical function issue, Just for recommendation to prevent Garbage Display )

**MODEL**

**LTA460HM04**

**Doc. No**

**06- 000- G- 100728**

**Page**

**18/25**



## 6. Outline Dimension- Front

**Samsung Secret**

TBD

**MODEL****LTA460HM04****Doc. No****06- 000- G- 100728****Page****19/25**



## 6. Outline Dimension- Rear

**Samsung Secret**

TBD

**MODEL****LTA460HM04****Doc. No****06- 000- G- 100728****Page****20/25**

**Samsung Secret**

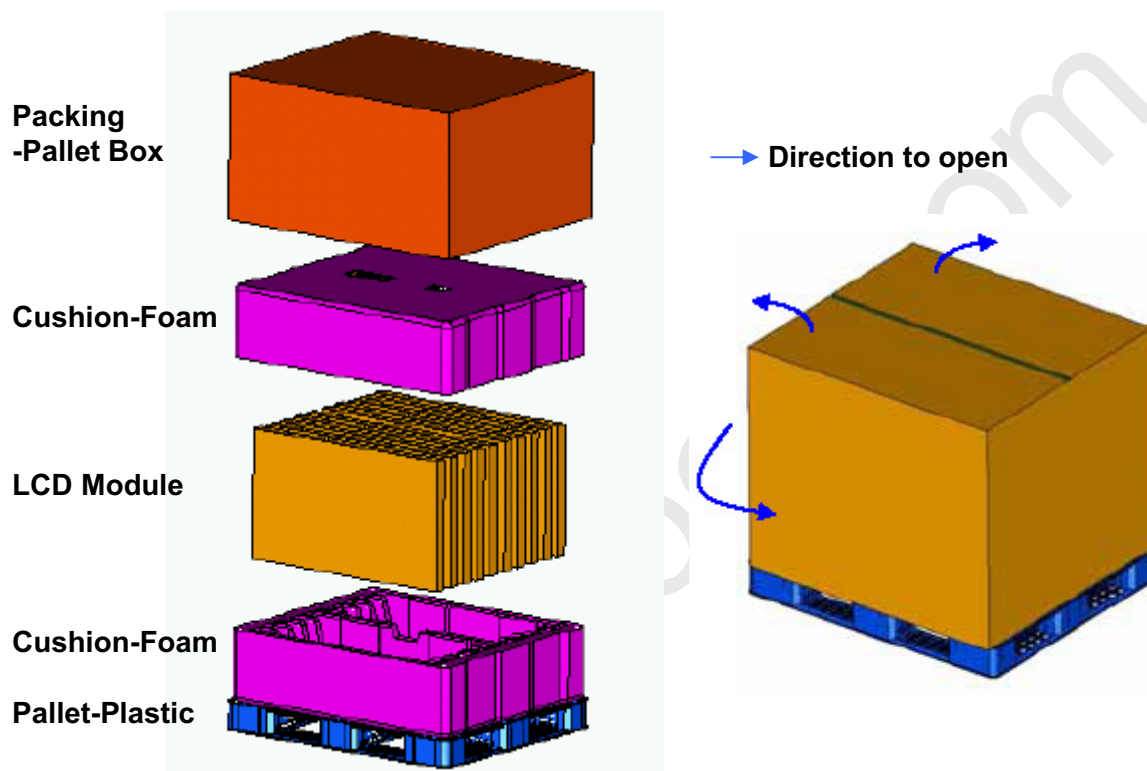
## 7. PACKING

### 7.1 CARTON (Internal Package)

#### (1) Packing Form

Corrugated fiberboard box and corrugated cardboard as shock absorber

#### (2) Packing Method



### 7.2 Packing Specification

Item	Specification	Remark
LCD Packing	16 ea / (Packing-Pallet Box)	1. TBD kg / LCD (16ea) 2. 12 Kg / Cushion-pallet (2ea) 3. 8 Kg / Packing-Pallet Box (1ea) 4. Cushion-pallet Material : EPS 5. Packing-Pallet Box Material : DW4
Pallet	1Box / Pallet	1. Pallet weight = 8.8 kg
Packing Direction	Vertical	
Total Pallet Size	H x V x height	1270mm(H) x 1150mm(V) x 844mm(height)
Total Pallet Weight	TBD kg	Pallet(8.8kg) + Module (TBD kg) + Cushion (up + bottom =12kg) + Pallet-BOX(8kg)

**MODEL****LTA460HM04****Doc. No****06- 000- G- 100728****Page****21/25**

**Samsung Secret**

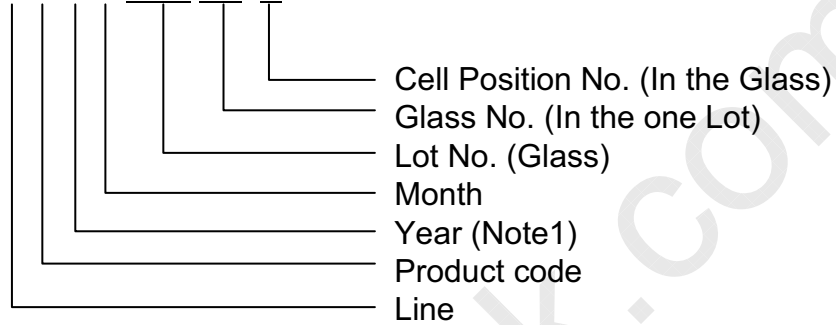
## 8. MARKING & OTHERS

A nameplate bearing followed by is affixed to a shipped product at the specified location on each product.

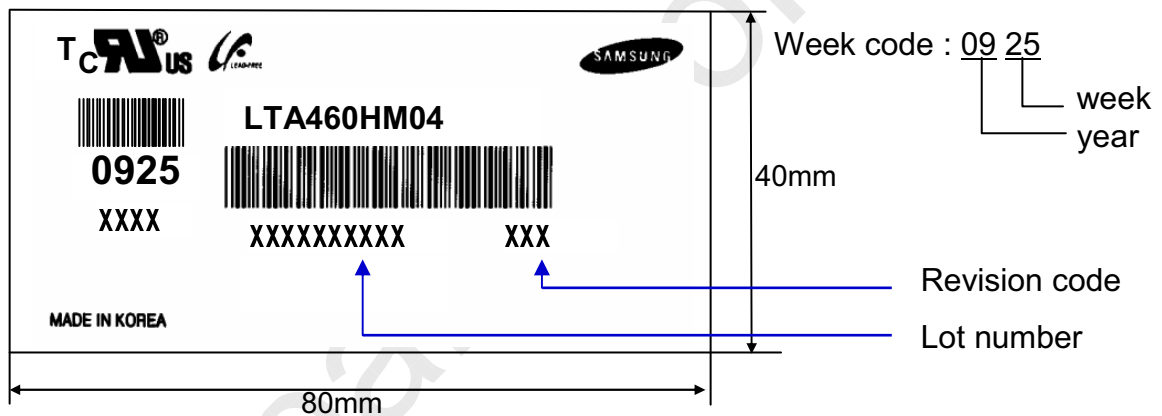
(1) Part number : LTA460HM04

(2) Revision: Three letters

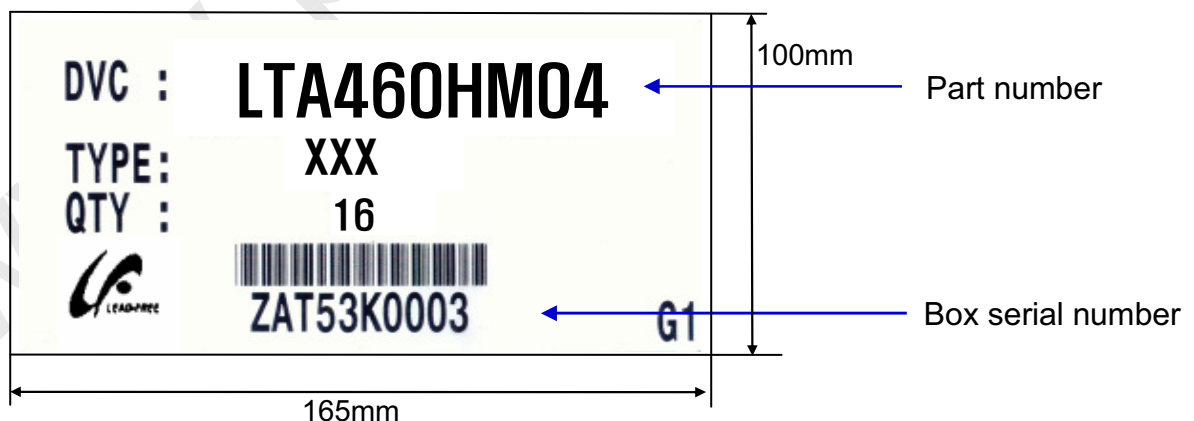
(3) Lot number : X X X X XXX XX X



(4) Nameplate Indication



(5) Packing box attach



(6) Others

1. After service part

Lamps cannot be replaced because of the narrow bezel structure.

**MODEL**

**LTA460HM04**

**Doc. No**

**06- 000- G- 100728**

**Page**

**22/25**

## 9. General Precautions

**Samsung Secret**

### 9.1 Handling

- (a) When the Module is assembled, it should be attached to the system firmly using all mounting holes. Be careful not to twist and bend the Module.
- (b) Because the inverter use high voltage, it should be disconnected from power before it is assembled or disassembled.
- (c) Refrain from strong mechanical shock and / or any force to the Module.  
In addition to damage, this may cause improper operation or damage to the Module and CCFT back light.
- (d) Note that polarizers are very fragile and could be damage easily.  
Do not press or scratch the surface harder than a HB pencil lead.
- (e) Wipe off water droplets or oil immediately. If you leave the droplets for a long time, staining or discoloration may occur.
- (f) If the surface of the polarizer is dirty, clean it using absorbent cotton or soft cloth.
- (g) Desirable cleaners are water, IPA(Isopropyl Alcohol) or Hexane.  
Do not use Ketone type materials(ex. Acetone), Ethyl alcohol, Toluene, Ethyl acid or Methyl chloride. It might permanent damage to the polarizer due to chemical reaction.
- (h) If the liquid crystal material leaks from the panel, it should be kept away from the eyes or mouth . In case of contact with hands, legs or clothes, it must be washed away with soap thoroughly.
- (i) Protect the module from Electrostatic discharge. Otherwise the ASIC IC or semiconductor would be damaged.
- (j) Use finger-stalls with soft gloves in order to keep display clean during the incoming inspection and assembly process.
- (k) Do not disassemble the Module.
- (l) Do not disassemble shield case of inverter & LVDS board
- (m) Do not connect N.C pins. (Samsung internal use only)
- (n) Protection film for polarizer on the Module should be slowly peeled off just before use so that the electrostatic charge can be minimized. Must put on antistatic glove while handling a module
- (o) Pins of I/F connector should not be touched directly with bare hands.

<b>MODEL</b>	<b>LTA460HM04</b>	<b>Doc. No</b>	<b>06- 000- G- 100728</b>	<b>Page</b>	<b>23/25</b>
--------------	-------------------	----------------	---------------------------	-------------	--------------

**Samsung Secret**

## 9.2 Storage

- (a) Do not leave the Module in high temperature, and high humidity for a long time.  
It is highly recommended to store the Module with temperature from 0 to 35 °C and relative humidity of less than 70%.
- (b) Do not store the TFT-LCD Module in direct sunlight.
- (c) The Module should be stored in a dark place. It is prohibited to apply sunlight or fluorescent light in storing.

## 9.3 Operation

- (a) Do not connect or disconnect the Module in the "Power On" condition.
- (b) Power supply should always be turned on/off by the "Power on/off sequence"
- (c) Module has high frequency circuits. Sufficient suppression to the electromagnetic interference should be done by system manufacturers. Grounding and shielding methods may be important to minimize the interference.
- (d) The cable between the back light connector and its inverter power supply should be connected directly with a minimized length. A longer cable between the back light and the inverter may cause lower luminance of LED and may require higher startup voltage(Vs).

## 9.4 Operation Condition Guide

- (a) The LCD product should be operated under normal conditions.  
Normal condition is defined as below;
  - Temperature :  $20 \pm 15^{\circ}\text{C}$
  - Humidity :  $55 \pm 20\%$
  - Display pattern : continually changing pattern (Not stationary)
- (b) If the product will be used in extreme conditions such as high temperature, humidity, display patterns or operation time etc., It is strongly recommended to contact SEC for Application engineering advice. Otherwise, its reliability and function may not be guaranteed. Extreme conditions are commonly found at Airports, Transit Stations, Banks, Stock market, and Controlling systems.

**MODEL****LTA460HM04****Doc. No****06- 000- G- 100728****Page****24/25**



## 9.5 Others

**Samsung Secret**

- (a) Ultra-violet ray filter is necessary for outdoor operation.
- (b) Avoid condensation of water. It may result in improper operation or disconnection of electrode.
- (c) Do not exceed the absolute maximum rating value. ( supply voltage variation, input voltage variation, variation in part contents and environmental temperature, and so on)  
Otherwise the Module may be damaged.
- (d) If the Module keeps displaying the same pattern for a long period of time, the image may be "sticked" to the screen.  
To avoid image sticking, it is recommended to use a screen saver.
- (e) This Module has its circuitry PCB's on the rear side and should be handled carefully in order not to be stressed.
- (f) Please contact SEC in advance when you display the same pattern for a long time.

**MODEL****LTA460HM04****Doc. No****06- 000- G- 100728****Page****25/25**