

TFT LCD Approved Specification

MODEL NO.: V150V1 - T01

Customer: _____

Approved by: _____

Note:

LCD TV Head Division	
AVP	郭振隆

QRA Dept.	TVHD/PDD		
	DDIII	DDII	DDI
Approval	Approval	Approval	Approval
陳永一	李汪洋	藍文錦	林文聰

LCD TV Marketing and Product Management Dept.	
Product Manager	洪瑞隆 胡崇銘

- CONTENTS -

REVISION HISTORY	-----	3
1. GENERAL DESCRIPTION	-----	4
1.1 OVERVIEW		
1.2 FEATURES		
1.3 APPLICATION		
1.4 GENERAL SPECIFICATIONS		
1.5 MECHANICAL SPECIFICATIONS		
2. ABSOLUTE MAXIMUM RATINGS	-----	5
2.1 ABSOLUTE RATINGS OF ENVIRONMENT		
2.2 ELECTRICAL ABSOLUTE RATINGS		
2.2.1 TFT LCD MODULE		
2.2.2 BACKLIGHT INVERTER UNIT		
3. ELECTRICAL CHARACTERISTICS	-----	6
3.1 TFT LCD MODULE		
3.2 BACKLIGHT UNIT		
3.2.1 CCFL (Cold Cathode Fluorescent Lamp) CHARACTERISTICS		
3.2.2 INVERTER CHARACTERISTICS		
3.2.3 INVERTER INTERFACE CHARACTERISTICS		
4. BLOCK DIAGRAM	-----	11
4.1 TFT LCD MODULE		
5. INPUT TERMINAL PIN ASSIGNMENT	-----	12
5.1 TFT LCD MODULE		
5.2 BACKLIGHT UNIT		
5.3 INVERTER UNIT		
5.4 COLOR DATA INPUT ASSIGNMENT		
6. INTERFACE TIMING	-----	15
6.1 INPUT SIGNAL TIMING SPECIFICATIONS		
6.2 POWER ON/OFF SEQUENCE		
7. OPTICAL CHARACTERISTICS	-----	17
7.1 TEST CONDITIONS		
7.2 OPTICAL SPECIFICATIONS		
8. PACKAGING	-----	21
8.1 PACKING SPECIFICATIONS		
8.2 PACKING METHOD		
9. DEFINITION OF LABELS	-----	23
9.1 CMO MODULE LABEL		
10. PRECAUTIONS	-----	24
10.1 ASSEMBLY AND HANDLING PRECAUTIONS		
10.2 SAFETY PRECAUTIONS		
10.3 SAFETY REGULATION		
11. MECHANICAL CHARACTERISTICS	-----	25

REVISION HISTORY

Version	Date	Page (New)	Section	Description
Ver 2.0	Jan. 05,'05	All	All	Approved Specification was first issued.
Ver. 2.1	Jun. 24,'05	12	5.1	Update connector Part No.: AF7501-N2G1Z (P-TWO)→ Hirose FH12-50S-0.5SH (55) or compatible
		25	11	Update mechanical drawing
		11	4	Update input connector P-TWO AF7501-N2G1Z→ Hirose FH12-50S-0.5SH(55)

1. GENERAL DESCRIPTION

1.1 OVERVIEW

V150V1-T01 is a 15" TFT Liquid Crystal Display module with 4-UCCFL Backlight unit and 1ch-TTL interface. This module supports 640 x 480 VGA format and displays 16.2M colors (6bits + FRC).

1.2 FEATURES

- High brightness 500 nits
- High contrast ratio 800:1
- Fast response time
- High color saturation NTSC 72%
- VGA (640 x 480 pixels) resolution
- DE (Data Enable) only mode
- TTL interface

1.3 APPLICATION

- TFT LCD TVs

1.4 GENERAL SPECIFICATIONS

Item	Specification	Unit	Note
Active Area	305.28 (H) x 228.96 (V)	mm	(1)
Bezel Opening Area	311.2 (H) x 235.0 (V)	mm	
Driver Element	a-si TFT active matrix	-	-
Pixel Number	640 x R.G.B. x 480	pixel	-
Pixel Pitch(Sub Pixel)	0.1555 (H) x 0.4665 (V)	mm	-
Pixel Arrangement	RGB vertical stripe	-	-
Display Colors	16.2M	color	-
Display Operation Mode	Transmissive mode / Normally black	-	-
Surface Treatment	Hardness : 3H, Haze : 25% Anti-reflective coating < 2% reflection	-	-

1.5 MECHANICAL SPECIFICATIONS

Item	Min.	Typ.	Max.	Unit	Note
Module Size	Horizontal(H)	330.7	331.2	331.7	mm (1)
	Vertical(V)	255.5	256.0	256.5	
	Depth(D)	41.00	42.78	44.00	mm with INV Cover
Weight	1260	1360	1460	gm.	-

Note (1) Please refer to the attached drawings for more information of front and back outline dimensions.

2. ABSOLUTE MAXIMUM RATINGS

2.1 ABSOLUTE RATINGS OF ENVIRONMENT

Item	Symbol	Value		Unit	Note
		Min.	Max.		
Storage Temperature	T _{ST}	-20	+60	°C	(1)
Operating Ambient Temperature	T _{OP}	0	50	°C	(1), (2)
Shock (Non-Operating)	S _{NOP}	-	50	G	(3), (5)
Vibration (Non-Operating)	V _{NOP}	-	1.0	G	(4), (5)

Note (1) Temperature and relative humidity range is shown in the figure below.

(a) 90 %RH Max. (Ta ≤ 40 °C).

(b) Wet-bulb temperature should be 39 °C Max. (Ta > 40 °C).

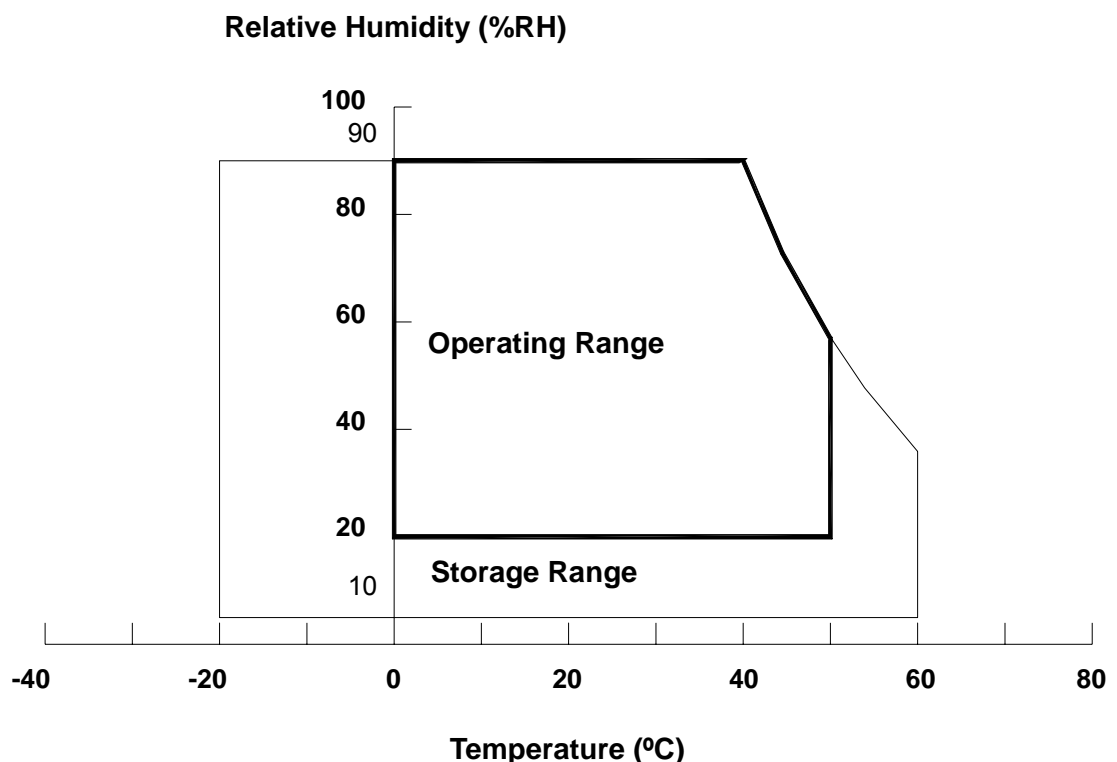
(c) No condensation.

Note (2) The maximum operating temperature is based on the test condition that the surface temperature of display area is less than or equal to 60 °C with LCD module alone in a temperature controlled chamber. Thermal management should be considered in your product design to prevent the surface temperature of display area from being over 60 °C. The range of operating temperature may degrade in case of improper thermal management in your product design.

Note (3) 11 ms, half sine wave, 1 time for ± X, ± Y, ± Z.

Note (4) 10 ~ 500 Hz, 10 min, 1 time each X, Y, Z.

Note (5) At testing Vibration and Shock, the fixture in holding the module has to be hard and rigid enough so that the module would not be twisted or bent by the fixture.



2.2 ELECTRICAL ABSOLUTE RATINGS

2.2.1 TFT LCD MODULE

Item	Symbol	Value		Unit	Note
		Min.	Max.		
Power Supply Voltage	V _{CC}	-0.3	+5.5	V	

2.2.2 BACKLIGHT INVERTER UNIT

Item	Symbol	Value		Unit	Note
		Min.	Max.		
Lamp Voltage	V _W	-	3000	V _{RMS}	
Power Supply Voltage	V _{BL}	0	15	V	(1)
Control Signal Level	-	-0.3	7	V	(1), (3)

Note (1) Permanent damage to the device may occur if maximum values are exceeded. Function operation should be restricted to the conditions described under Normal Operating Conditions.

Note (2) No moisture condensation or freezing.

Note (3) The control signals includes On/Off Control, Internal PWM Control.

3. ELECTRICAL CHARACTERISTICS

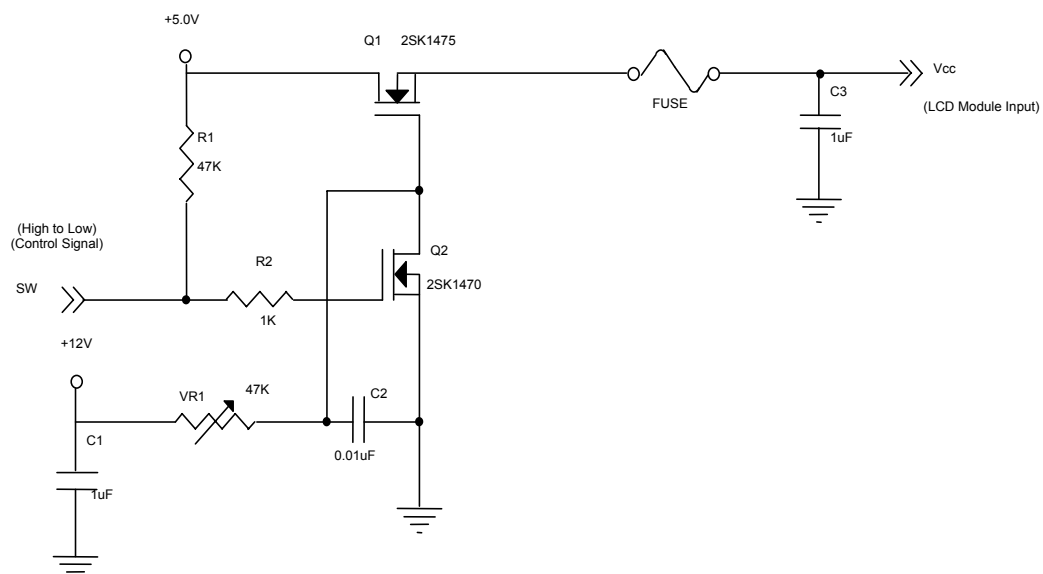
3.1 TFT LCD MODULE

T_a = 25 ± 2 °C

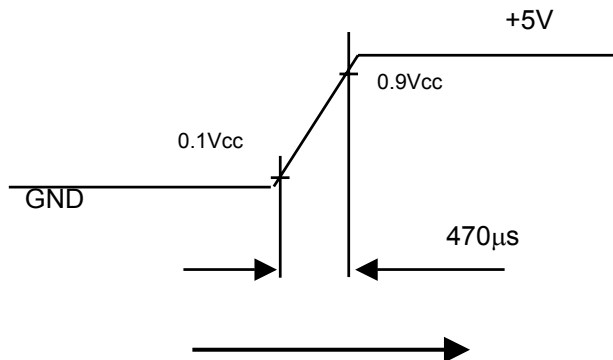
Parameter		Symbol	Value			Unit	Note
			Min.	Typ.	Max.		
Power Supply Voltage		V _{CC}	4.5	5.0	5.5	V	(1)
Ripple Voltage		V _{RP}	-	-	150	mV	(2)
Rush Current		I _{RUSH}	-	-	2.5	A	
Power Supply Current	White	I _{CC}	-	0.85	-	A	(3)
	Black		-	0.70	-	A	
	Vertical Stripe		-	0.80	-	A	
TTL input high threshold voltage		V _{IH}	2.7	-	3.3	V	
TTL input low threshold voltage		V _{IL}	0	-	0.7	V	

Note (1) The module should be always operated within above ranges.

Note (2) Measurement Conditions:



Vcc rising time is 470μs



Note (3) The specified power supply current is under the conditions at Vcc = 5 V, Ta = 25 ± 2 °C, f_v = 60 Hz, whereas a power dissipation check pattern below is displayed.

a. White Pattern



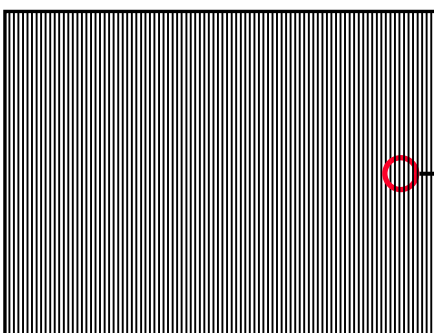
Active Area

b. Black Pattern

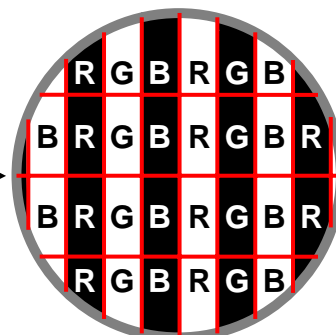


Active Area

c. Vertical Stripe Pattern



Active Area



3.2 BACKLIGHT UNIT

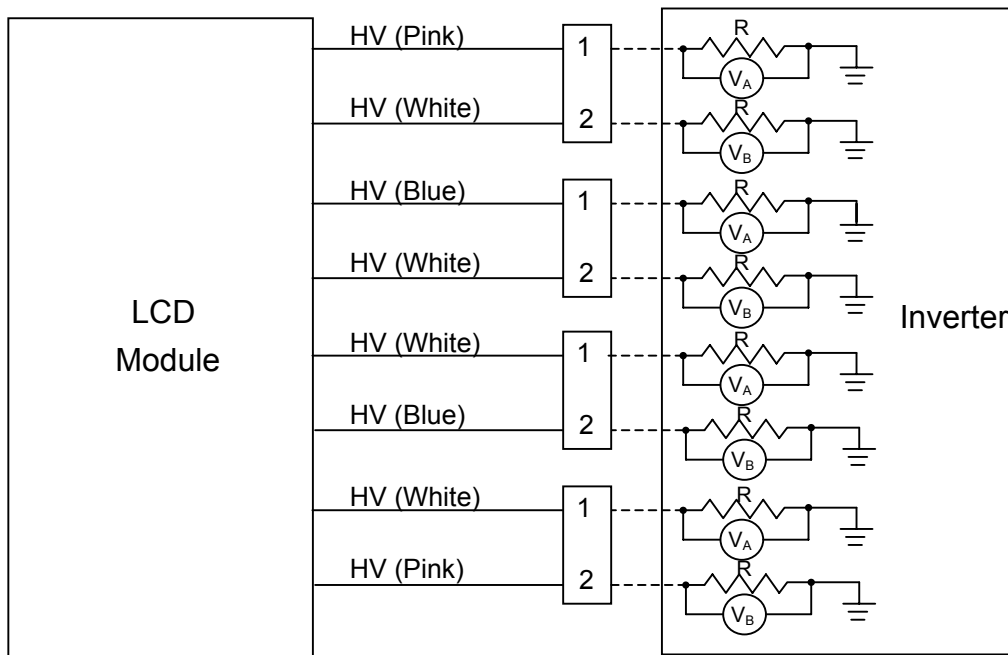
3.2.1 CCFL (Cold Cathode Fluorescent Lamp) CHARACTERISTICS (Ta = 25 ± 2 °C)

Parameter	Symbol	Value			Unit	Note
		Min.	Typ.	Max.		
Lamp Voltage	V _W	-	985	-	V _{RMS}	I _L = 5.0 mA
Lamp Current	I _L	4.5	5.0	5.5	mA _{RMS}	(1)
Lamp Starting Voltage	V _S	-	-	1900	V _{RMS}	(2), Ta = 0 °C
		-	-	1700	V _{RMS}	(2), Ta = 25 °C
Operating Frequency	F _O	40	-	80	KHz	(3)
Lamp Life Time	L _{BL}	50,000	60,000	-	Hrs	(4)

3.2.2 INVERTER CHARACTERISTICS (Ta = 25 ± 2 °C)

Parameter	Symbol	Value			Unit	Note
		Min.	Typ.	Max.		
Power Consumption	P _{BL}	-	24	-	W	(5), I _L = 5.0 mA
Power Supply Voltage	V _{BL}	11.4	12	12.6	V _{DC}	
Power Supply Current	I _{BL}	-	2.0	-	A	Non Dimming
Input Ripple Noise	-	-	-	250	mV _{P-P}	V _{BL} = 11.4V
Backlight Turn on Voltage	V _{BS}	1900	-	3000	V _{RMS}	Ta = 0 °C
Oscillating Frequency	F _W	58	61	64	kHz	
Dimming Frequency	F _B	150	160	170	Hz	
Minimum Duty Ratio	D _{MIN}	-	20	-	%	

Note (1) Lamp current is measured by utilizing high frequency current meters as shown below, and lamp current I_L = (V_A+V_B)/2R mA_{RMS}:



Note (2) The lamp starting voltage V_s should be applied to the lamp for more than 1 second after startup. Otherwise the lamp may not be turned on.

Note (3) The lamp frequency may produce interference with horizontal synchronous frequency of the display input signals, and it may result in line flow on the display. In order to avoid interference, the lamp frequency should be detached from the horizontal synchronous frequency and its harmonics as far as possible.

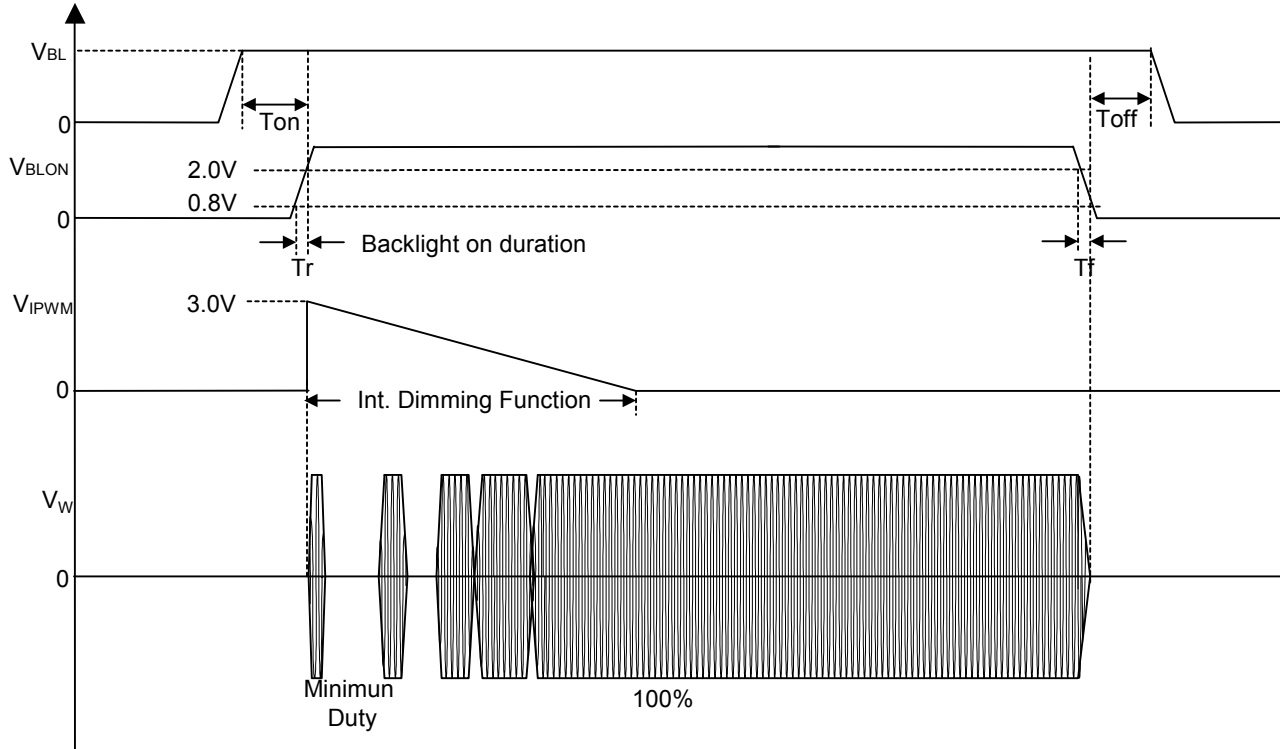
Note (4) The life time of a lamp is defined as when the brightness is larger than 50% of its original value and the effective discharge length is longer than 80% of its original length (Effective discharge length is defined as an area that has equal to or more than 70% brightness compared to the brightness at the center point of lamp.) as the time in which it continues to operate under the condition at $T_a = 25 \pm 2$ and $I_L = 4.5 \sim 5.5$ mArms.

Note (5) The power supply capacity should be higher than the total inverter power consumption P_{BL} . Since the pulse width modulation (PWM) mode was applied for backlight dimming, the driving current changed as PWM duty on and off. The transient response of power supply should be considered for the changing loading when inverter dimming.

3.2.3 INVERTER INTERFACE CHARACTERISTICS

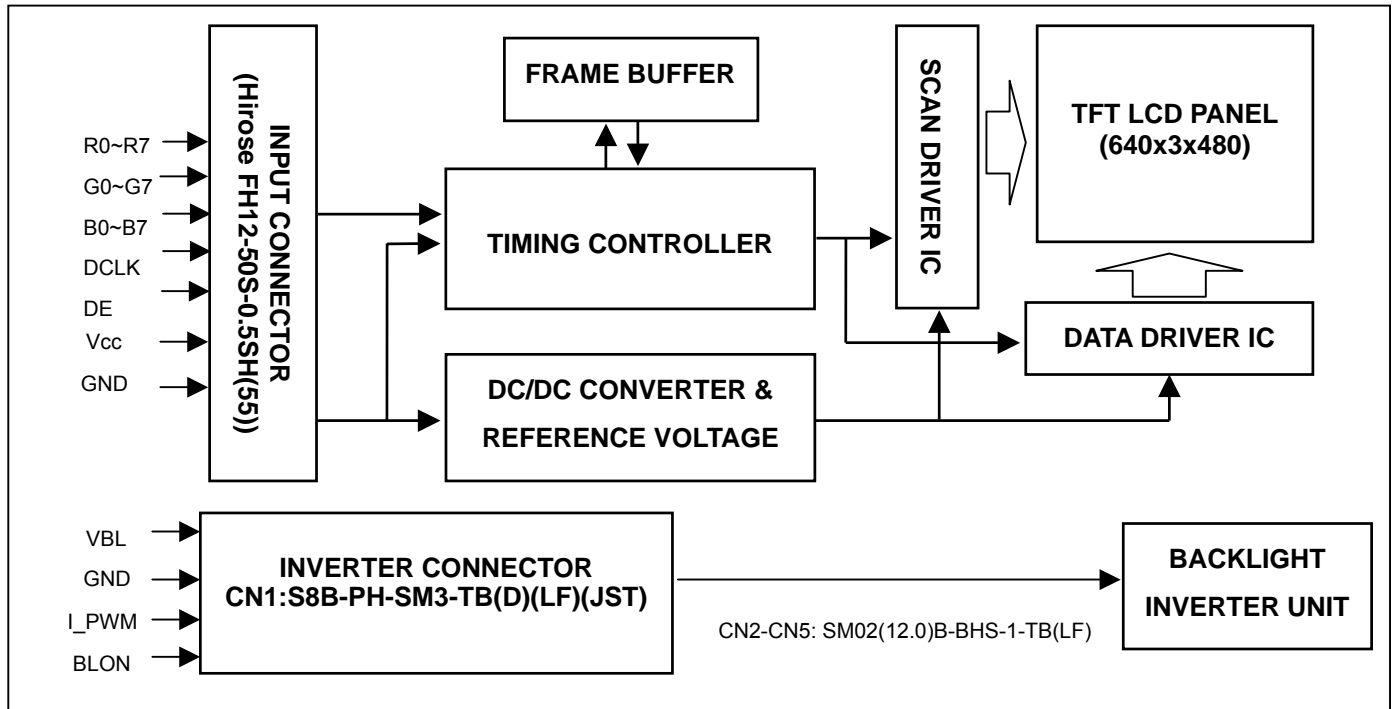
Item		Symbol	Test Condition	Min.	Typ.	Max.	Unit	Note
On/Off Control Voltage	ON	V_{BLON}	-	2.0	-	5.0	V	
	OFF		-	0	-	0.8	V	
Internal PWM Control Voltage	MAX	V_{IPWM}	-	-	-	3.0	V	minimum duty ratio
	MIN			-	0	-	V	maximum duty ratio
Control Signal Rising Time		T_r	-	-	-	100	ms	
Control Signal Falling Time		T_f	-	-	-	100	ms	
Input impedance		R_{IN}	-	1	-	-	M	
BLON Delay Time		T_{on}	-	1	-	-	ms	
BLON Off Time		T_{off}	-	1	-	-	ms	

Note (1) The power sequence and control signal timing are shown in the following figure.



4. BLOCK DIAGRAM

4.1 TFT LCD MODULE



5. INTERFACE PIN CONNECTION

5.1 TFT LCD MODULE

CN1 Connector Pin assignment

Pin	Name	Description	Pin	Name	Description
1	NC	No Connection	26	R0	Red Data
2	NC	No Connection	27	GND	Ground
3	NC	No Connection	28	G7	Green Data (G7:MSB)
4	GND	Ground	29	G6	
5	GND	Ground	30	G5	
6	VCC	Power Input (+5.0V)	31	G4	
7	VCC		32	GND	Ground
8	VCC		33	G3	Green Data
9	VCC		34	G2	
10	GND	Ground	35	G1	
11	NC		36	G0	
12	NC		37	GND	Ground
13	GND	Ground	38	B7	Blue Data (B7:MSB)
14	DE	Data Enable	39	B6	
15	GND	Ground	40	B5	
16	DCLK	Dot Clock	41	B4	
17	GND	Ground	42	GND	Ground
18	R7	Red Data (R7:MSB)	43	B3	Blue Data
19	R6		44	B2	
20	R5		45	B1	
21	R4		46	B0	
22	GND	Ground	47	GND	Ground
23	R3	Red Data	48	GND	Ground
24	R2		49	NC	No Connection
25	R1		50	NC	No Connection

Note (1) Connector Part No.: [Hirose FH12-50S-0.5SH \(55\)](#) or compatible

Note (2) NC pin has to keep high impedance

5.2 BACKLIGHT UNIT

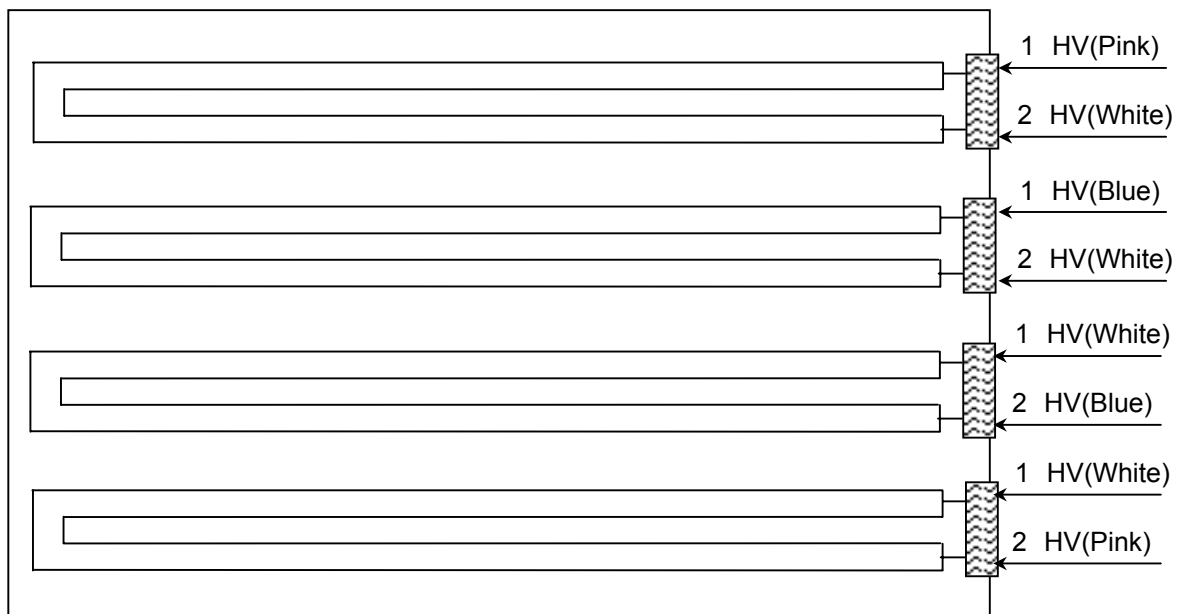
The pin configuration for the housing and leader wire is shown in the table below.

CN2-CN5(Housing): BHR-04VS-1

Pin No	Signal name	Feature
1	HV	High Voltage
2	HV	High Voltage

Note (1) The backlight interface housing for high voltage side is a model BHR-04VS-1, manufactured by JST.

The mating header on inverter part number is SM02(12.0)B-BHS-1-TB(LF).



5.3 INVERTER UNIT

CN1(Header): S8B-PH-SM3-TB(D)(LF)(JST) or equivalent

Pin	Symbol	Description
1	VBL	+12V Power input
2		
3		
4	GND	Ground
5		
6		
7	I_PWM	Internal PWM control signal
8	BLON	Backlight on/off control

CN2-CN5(Header):SM02(12.0)B-BHS-1-TB (LF)(JST)

Pin	Symbol	Description
1	CCFL HOT	CCFL high voltage
2	CCFL HOT	CCFL high voltage

Note (1) Floating of any control signal is not allowed.

5.4 COLOR DATA INPUT ASSIGNMENT

The brightness of each primary color (red, green and blue) is based on the 8-bit gray scale data input for the color. The higher the binary input, the brighter the color. The table below provides the assignment of color versus data input.

Color		Data Signal																							
		Red								Green								Blue							
		R7	R6	R5	R4	R3	R2	R1	R0	G7	G6	G5	G4	G3	G2	G1	G0	B7	B6	B5	B4	B3	B2	B1	B0
Basic Colors	Black	0	0	0	0	0	0	0	0	0	0	0	0	0	0	0	0	0	0	0	0	0	0	0	0
	Red	1	1	1	1	1	1	1	1	0	0	0	0	0	0	0	0	0	0	0	0	0	0	0	0
	Green	0	0	0	0	0	0	0	0	1	1	1	1	1	1	1	1	0	0	0	0	0	0	0	0
	Blue	0	0	0	0	0	0	0	0	0	0	0	0	0	0	0	0	1	1	1	1	1	1	1	1
	Cyan	0	0	0	0	0	0	0	0	1	1	1	1	1	1	1	1	1	1	1	1	1	1	1	1
	Magenta	1	1	1	1	1	1	1	1	0	0	0	0	0	0	0	0	1	1	1	1	1	1	1	1
	Yellow	1	1	1	1	1	1	1	1	1	1	1	1	1	1	1	1	0	0	0	0	0	0	0	0
	White	1	1	1	1	1	1	1	1	1	1	1	1	1	1	1	1	1	1	1	1	1	1	1	1
Gray Scale Of Red	Red(0) / Dark	0	0	0	0	0	0	0	0	0	0	0	0	0	0	0	0	0	0	0	0	0	0	0	0
	Red(1)	0	0	0	0	0	0	0	1	0	0	0	0	0	0	0	0	0	0	0	0	0	0	0	0
	Red(2)	0	0	0	0	0	0	1	0	0	0	0	0	0	0	0	0	0	0	0	0	0	0	0	0
	:	:	:	:	:	:	:	:	:	:	:	:	:	:	:	:	:	:	:	:	:	:	:	:	:
	:	:	:	:	:	:	:	:	:	:	:	:	:	:	:	:	:	:	:	:	:	:	:	:	:
	Red(253)	1	1	1	1	1	1	0	1	0	0	0	0	0	0	0	0	0	0	0	0	0	0	0	0
	Red(254)	1	1	1	1	1	1	1	0	0	0	0	0	0	0	0	0	0	0	0	0	0	0	0	0
	Red(255)	1	1	1	1	1	1	1	1	0	0	0	0	0	0	0	0	0	0	0	0	0	0	0	0
Gray Scale Of Green	Green(0) / Dark	0	0	0	0	0	0	0	0	0	0	0	0	0	0	0	0	0	0	0	0	0	0	0	0
	Green(1)	0	0	0	0	0	0	0	0	0	0	0	0	0	0	0	1	0	0	0	0	0	0	0	0
	Green(2)	0	0	0	0	0	0	0	0	0	0	0	0	0	0	1	0	0	0	0	0	0	0	0	0
	:	:	:	:	:	:	:	:	:	:	:	:	:	:	:	:	:	:	:	:	:	:	:	:	:
	:	:	:	:	:	:	:	:	:	:	:	:	:	:	:	:	:	:	:	:	:	:	:	:	:
	Green(253)	0	0	0	0	0	0	0	0	1	1	1	1	1	1	0	1	0	0	0	0	0	0	0	0
	Green(254)	0	0	0	0	0	0	0	0	1	1	1	1	1	1	1	0	0	0	0	0	0	0	0	0
	Green(255)	0	0	0	0	0	0	0	0	1	1	1	1	1	1	1	1	0	0	0	0	0	0	0	0
Gray Scale Of Blue	Blue(0) / Dark	0	0	0	0	0	0	0	0	0	0	0	0	0	0	0	0	0	0	0	0	0	0	0	0
	Blue(1)	0	0	0	0	0	0	0	0	0	0	0	0	0	0	0	0	0	0	0	0	0	0	0	1
	Blue(2)	0	0	0	0	0	0	0	0	0	0	0	0	0	0	0	0	0	0	0	0	0	1	0	0
	:	:	:	:	:	:	:	:	:	:	:	:	:	:	:	:	:	:	:	:	:	:	:	:	:
	:	:	:	:	:	:	:	:	:	:	:	:	:	:	:	:	:	:	:	:	:	:	:	:	:
	Blue(253)	0	0	0	0	0	0	0	0	0	0	0	0	0	0	0	0	1	1	1	1	1	1	0	1
	Blue(254)	0	0	0	0	0	0	0	0	0	0	0	0	0	0	0	0	1	1	1	1	1	1	1	0
	Blue(255)	0	0	0	0	0	0	0	0	0	0	0	0	0	0	0	0	1	1	1	1	1	1	1	1

Note (1) 0: Low Level Voltage, 1: High Level Voltage

6. INTERFACE TIMING

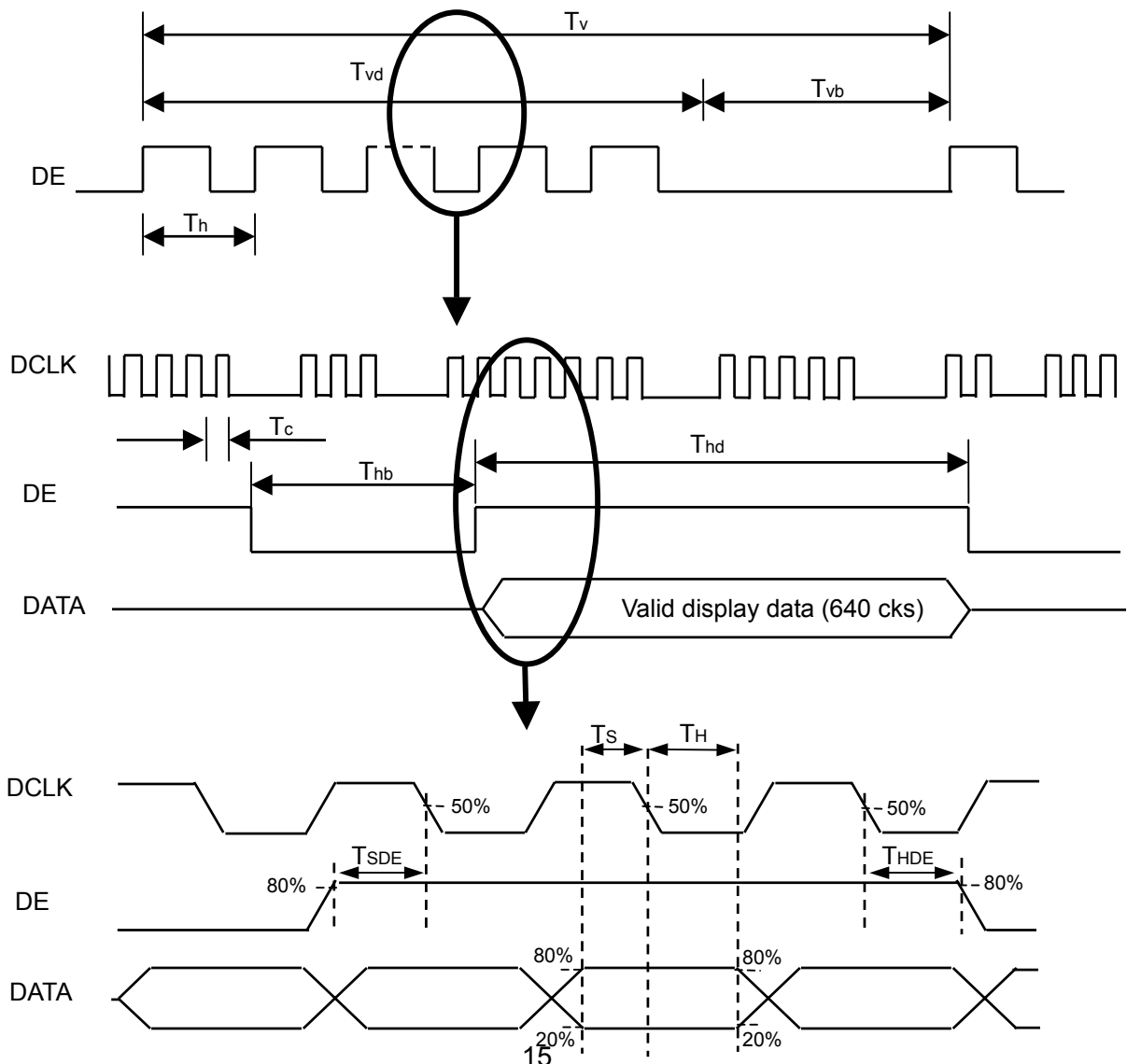
6.1 INPUT SIGNAL TIMING SPECIFICATIONS

The input signal timing specifications are shown as the following table and timing diagram.

Signal	Item	Symbol	Min.	Typ.	Max.	Unit	Note
Clock	Frequency	1/Tc	20	25	30	MHz	-
Vertical Active Display Term	Frame Rate	Fr	47	60	63	Hz	-
	Total	Tv	500	525	550	Th	Tv=Tvd+Tvb
	Display	Tvd	480	480	480	Th	-
	Blank	Tvb	20	45	70	Th	-
Horizontal Active Display Term	Total	Th	750	800	850	Tc	Th=Thd+Thb
	Display	Thd	640	640	640	Tc	-
	Blank	Thb	110	160	210	Tc	-
Input data Term	Setup time	Ts	7	--	--	ns	
	Hold time	TH	7	--	--	ns	
DE Term	Setup time	T _{SDE}	7	--	--	ns	
	Hold time	T _{HDE}	7	--	--	ns	

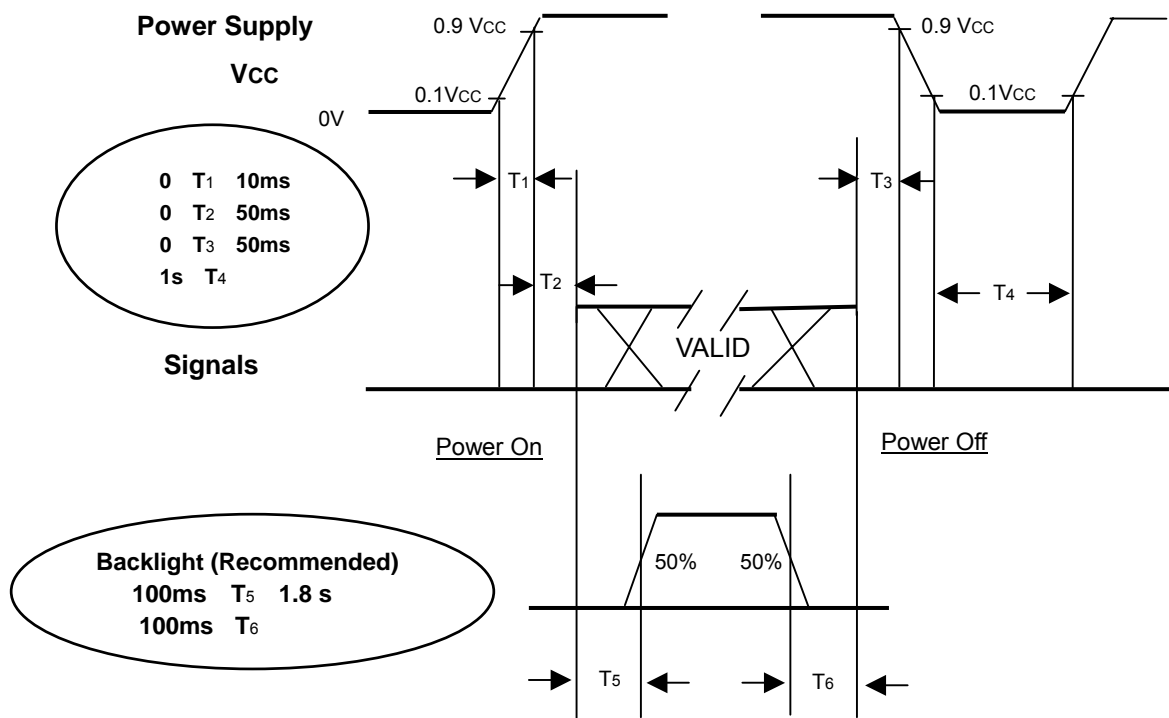
Note: Since this module is operated by in DE only mode, Hsync and Vsync input signals should be set to low logic level or ground. Otherwise, this module would operate abnormally.

INPUT SIGNAL TIMING DIAGRAM



6.2 POWER ON/OFF SEQUENCE

To prevent a latch-up or DC operation of LCD module, the power on/off sequence should be as the diagram below.



Power ON/OFF Sequence

Note (1) The supply voltage of the external system for the module input should be the same as the definition of Vcc.

Note (2) Apply the lamp voltage within the LCD operation range. When the backlight turns on before the LCD operation or the LCD turns off before the backlight turns off, the display may momentarily become abnormal screen.

Note (3) In case of Vcc = off level, please keep the level of input signals on the low or keep a high impedance.

Note (4) T4 should be measured after the module has been fully discharged between power off and on period.

Note (5) Interface signal shall not be kept at high impedance when the power is on.

7. OPTICAL CHARACTERISTICS

7.1 TEST CONDITIONS

Item	Symbol	Value	Unit
Ambient Temperature	Ta	25±2	°C
Ambient Humidity	Ha	50±10	%RH
Supply Voltage	V _{CC}	5.0	V
Input Signal	According to typical value in "3. ELECTRICAL CHARACTERISTICS"		
Lamp Current	I _L	5.0±0.5	mA
Oscillating Frequency (Inverter)	F _W	61±3	KHz
Frame Rate	Fr	60	Hz

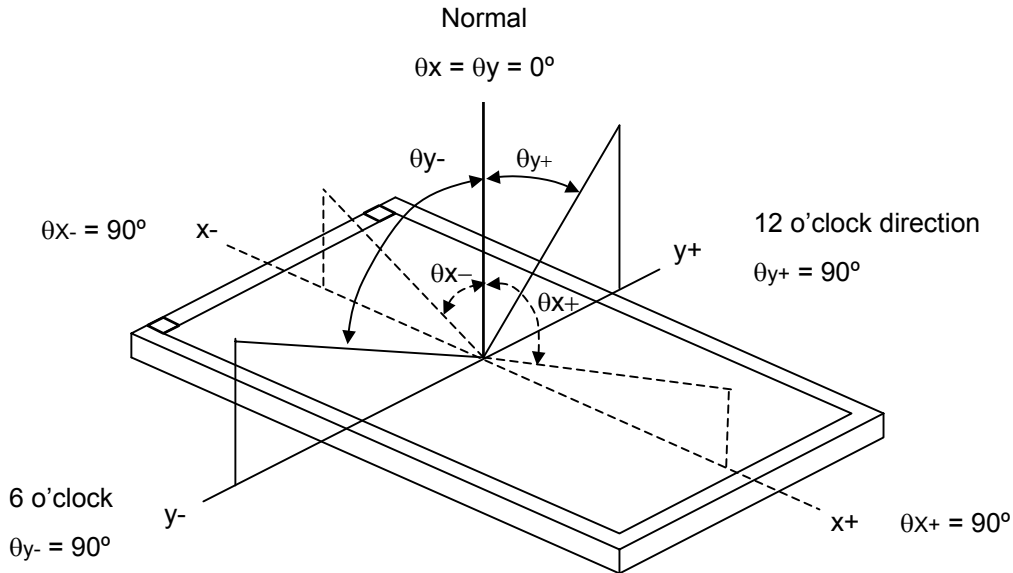
7.2 OPTICAL SPECIFICATIONS

The relative measurement methods of optical characteristics are shown in 7.2. The following items should be measured under the test conditions described in 7.1 and stable environment shown in Note (6).

Item		Symbol	Condition	Min.	Typ.	Max.	Unit	Note
Contrast Ratio		CR	$\theta_x=0^\circ, \theta_Y=0^\circ$ Viewing Normal Angle	600	800	-	-	Note(2)
Response time		Gray to gray(Average)		-	8	12	ms	Note(3)
Center Luminance of White		L _C		400	500	-	cd/m ²	Note(4)
Average Luminance of White		L _{AVE}		400	450	-	cd/m ²	Note(4)
White Variation		δW		-	-	1.3	-	Note(7)
Cross Talk		CT		-	-	4	%	Note(5)
Color Chromaticity	Red	Rx		0.615	0.645	0.675	-	Note(6)
		Ry		0.310	0.330	0.360	-	
	Green	Gx		0.241	0.271	0.301	-	
		Gy		0.560	0.590	0.620	-	
	Blue	Bx		0.113	0.143	0.173	-	
		By		0.036	0.066	0.096	-	
	White	Wx		0.242	0.272	0.302	-	
		Wy		0.248	0.278	0.308	-	
	Color Gamut				70	72	-	
Viewing Angle	Horizontal	θ _x +	CR≥20	80	88	-	Deg.	Note(1)
		θ _x -		80	88	-		
	Vertical	θ _Y +		80	88	-		
		θ _Y -		80	88	-		

Note (1) Definition of Viewing Angle (θ_x , θ_y):

Viewing angles are measured by Eldim EZ-Contrast 160R



Note (2) Definition of Contrast Ratio (CR):

The contrast ratio can be calculated by the following expression.

$$\text{Contrast Ratio (CR)} = L_{255} / L_0$$

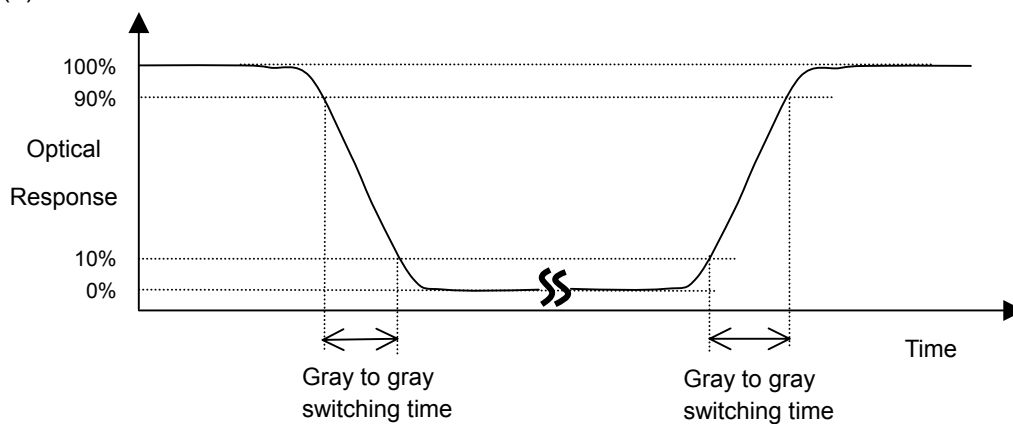
L255: Luminance of gray level 255

L 0: Luminance of gray level 0

$$\text{CR} = \text{CR} (5)$$

CR (X) is corresponding to the Contrast Ratio of the point X at the figure in Note (7).

Note (3)



. The driving signal means the signal of gray level 0, 63, 127, 191, 255.

Gray to gray average time means the average switching time of gray level 0, 63, 127, 191, 255 to each other.

Note (4) Definition of Luminance of White (L_C , L_{AVE}):

Measure the luminance of gray level 255 at center point and 5 points

$$L_C = L(5)$$

$$L_{AVE} = [L(1) + L(2) + L(3) + L(4) + L(5)] / 5$$

$L(x)$ is corresponding to the luminance of the point X at the figure in Note (7).

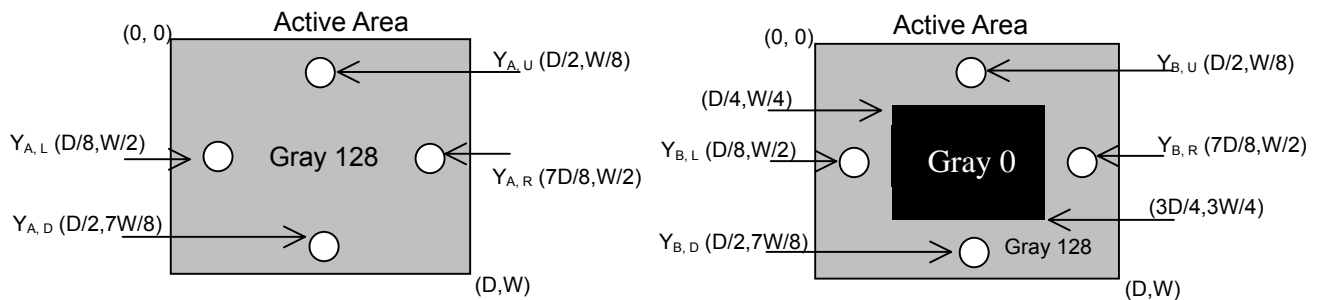
Note (5) Definition of Cross Talk (CT):

$$CT = |Y_B - Y_A| / Y_A \times 100 (\%)$$

Where:

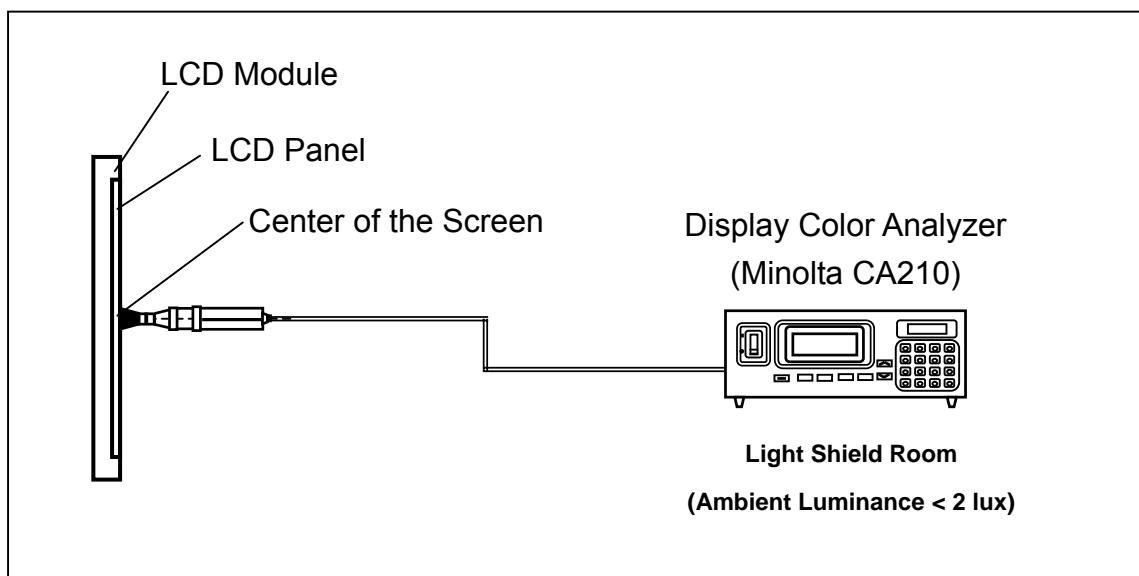
Y_A = Luminance of measured location without gray level 0 pattern (cd/m^2)

Y_B = Luminance of measured location with gray level 0 pattern (cd/m^2)



Note (6) Measurement Setup:

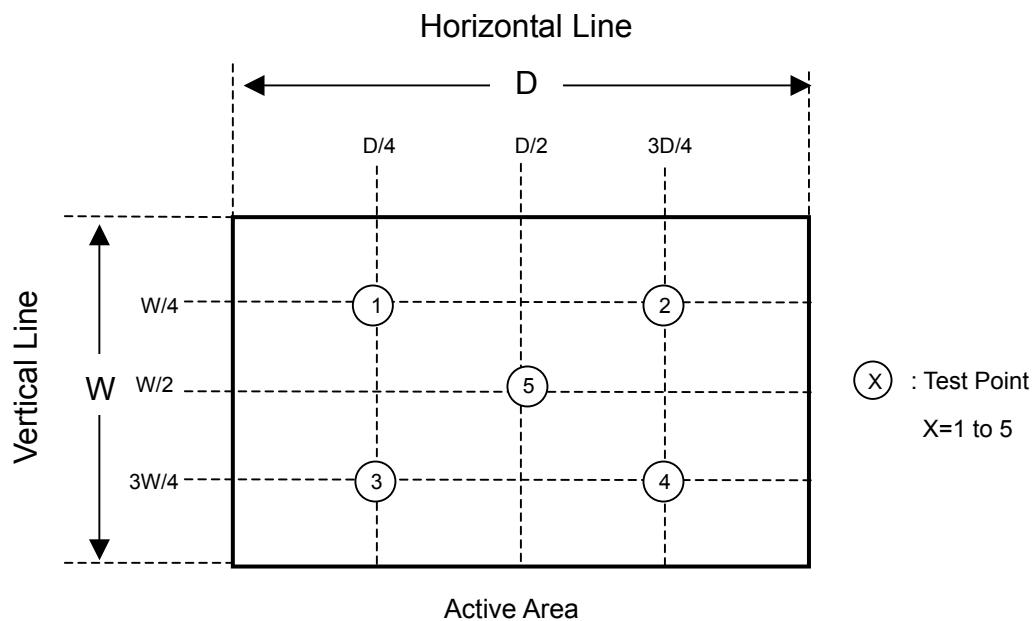
The LCD module should be stabilized at given temperature for 1 hour to avoid abrupt temperature change during measuring. In order to stabilize the luminance, the measurement should be executed after lighting Backlight for 1 hour in a windless room.



Note (7) Definition of White Variation (δW):

Measure the luminance of gray level 255 at 5 points

$$\delta W = \text{Maximum} [L(1), L(2), L(3), L(4), L(5)] / \text{Minimum} [L(1), L(2), L(3), L(4), L(5)]$$



8. PACKAGING

8.1 PACKING SPECIFICATIONS

- (1) 7 LCD TV modules / carton
- (2) carton dimensions :495(L) X 436 (W) X 360 (H)
- (3) Weight : approximately 12Kg (7 modules per carton)

8.2 PACKING Method

Figures 8-1 and 8-2 are the packing method

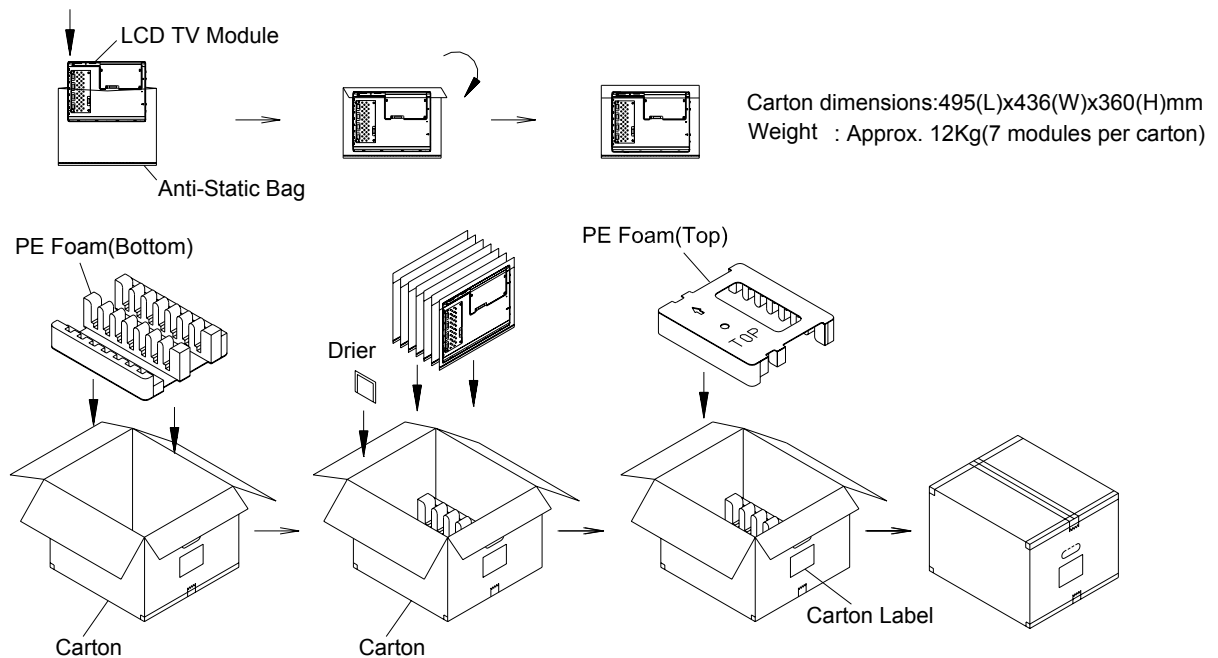


Figure.8-1 packing method

Corner Protector:L1400*50mm*50mm
Pallet:L960*W960*H135mm
Corrugated Fiberboard:L960*W960mm
Pallet Stack:L960*W960*H1585mm
Gross:207kg

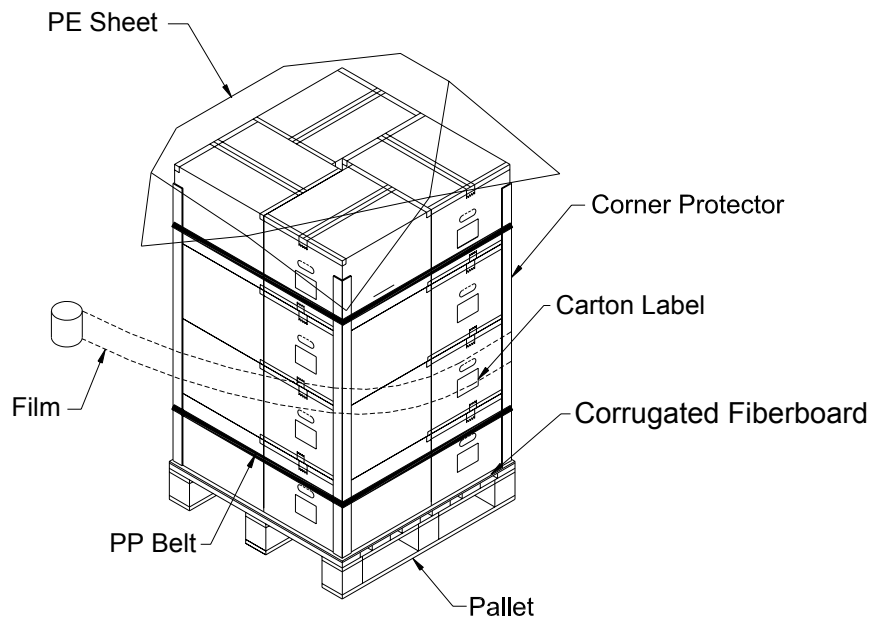
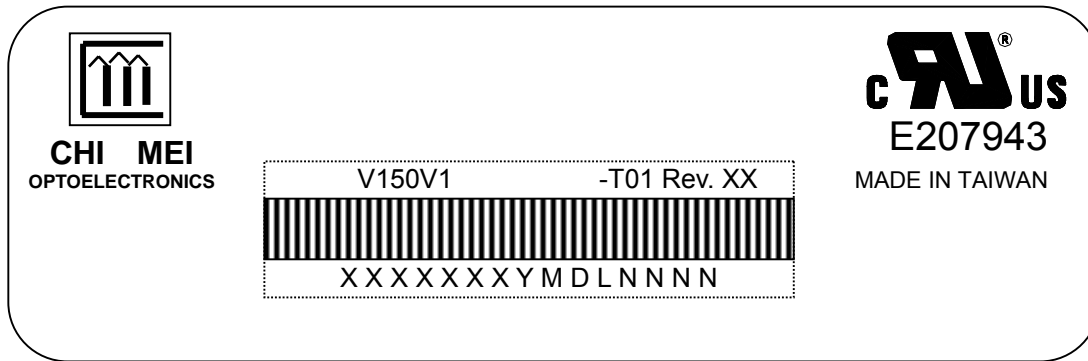


Figure. 8-2 Packing method

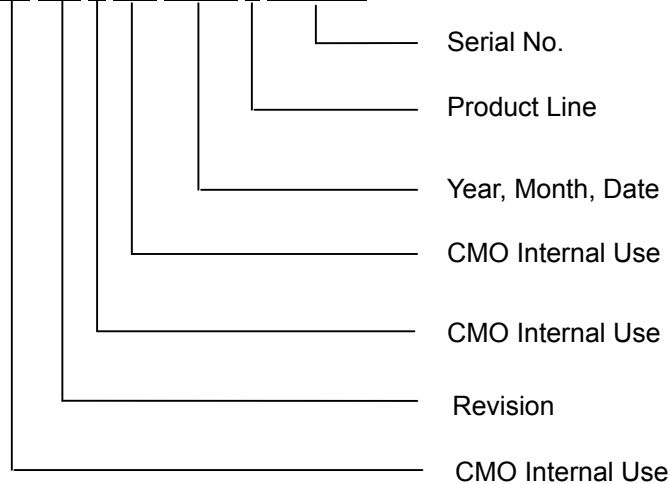
9. DEFINITION OF LABELS

9.1 CMO MODULE LABEL

The barcode nameplate is pasted on each module as illustration, and its definitions are as following explanation.



- (a) Model Name: V150V1-T01
 (b) Revision: Rev. XX, for example: A0, A1... B1, B2... or C1, C2...etc.
 (c) Serial ID: XXXXXXXYMDLNNNN



Serial ID includes the information as below:

- (a) Manufactured Date: Year: 0~9, for 2000~2009
 Month: 1~9, A~C, for Jan. ~ Dec.
 Day: 1~9, A~Y, for 1st to 31st, exclude I, O, and U.
 (b) Revision Code: Cover all the change
 (c) Serial No.: Manufacturing sequence of product
 (d) Product Line: 1 -> Line1, 2 -> Line 2, ...etc.

10. PRECAUTIONS

10.1 ASSEMBLY AND HANDLING PRECAUTIONS

- (1) Do not apply rough force such as bending or twisting to the module during assembly.
- (2) It is recommended to assemble or to install a module into the user's system in clean working areas.
The dust and oil may cause electrical short or worsen the polarizer.
- (3) Do not apply pressure or impulse to the module to prevent the damage of LCD panel and Backlight.
- (4) Always follow the correct power-on sequence when the LCD module is turned on. This can prevent the damage and latch-up of the CMOS LSI chips.
- (5) Do not plug in or pull out the I/F connector while the module is in operation.
- (6) Do not disassemble the module.
- (7) Use a soft dry cloth without chemicals for cleaning, because the surface of polarizer is very soft and easily scratched.
- (8) Moisture can easily penetrate into LCD module and may cause the damage during operation.
- (9) High temperature or humidity may deteriorate the performance of LCD module. Please store LCD modules in the specified storage conditions.
- (10) When ambient temperature is lower than 10°C, the display quality might be reduced. For example, the response time will become slow, and the starting voltage of CCFL will be higher than that of room temperature.

10.2 SAFETY PRECAUTIONS

- (1) The startup voltage of a Backlight is approximately 1000 Volts. It may cause an electrical shock while assembling with the inverter. Do not disassemble the module or insert anything into the Backlight unit.
- (2) If the liquid crystal material leaks from the panel, it should be kept away from the eyes or mouth. In case of contact with hands, skin or clothes, it has to be washed away thoroughly with soap.
- (3) After the module's end of life, it is not harmful in case of normal operation and storage.

10.3 SAFETY REGULATION

- (1) V150V1 is certified with Safety Regulation UL 6500. File No.E240708
- (2) V150V1 is certified with Safety Regulation UL 60950. File No.E207943
- (3) V150V1 is certified with Safety Regulation IEC 60065.
- (4) V150V1 is certified with Safety Regulation IEC 60950.

11. MECHANICAL CHARACTERISTICS

