

0.35mmPitch Board-to-Board Connector

BB35 Series

DDK Ltd.

OUTLINE

BB35 series is a 0.35mm pitch board-to-board connector with stacking height 0.7mm for smaller and thinner devices.

It has a unique locking tab mechanism which serves as a power contact and improves the strength against manual assembly error.

FEATURES

- Locking tabs can serve as power contacts (Capability up to 1.5A/contact), which allows for more efficient use of the available connection pins.
- High extraction force (Example : 32 pins > 9N Min.)
- Connector designed to provide click feel when engaged to reduce assembly errors.
- The locking tabs of the receptacle connector are assembled by insert molding making a more robust structure to withstand manual assembly errors.
- Halogen and Beryllium free

APPLICATIONS

Mobile phone, PDA,
other compact portable devices

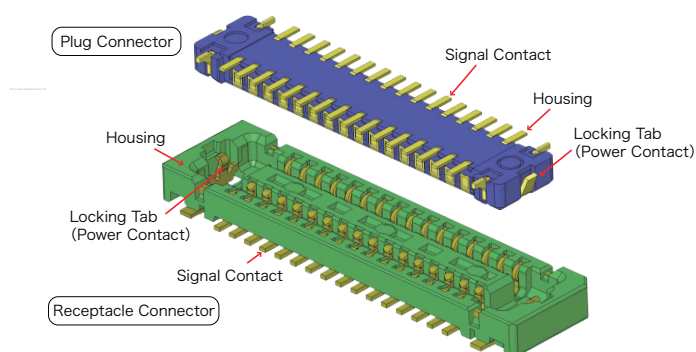
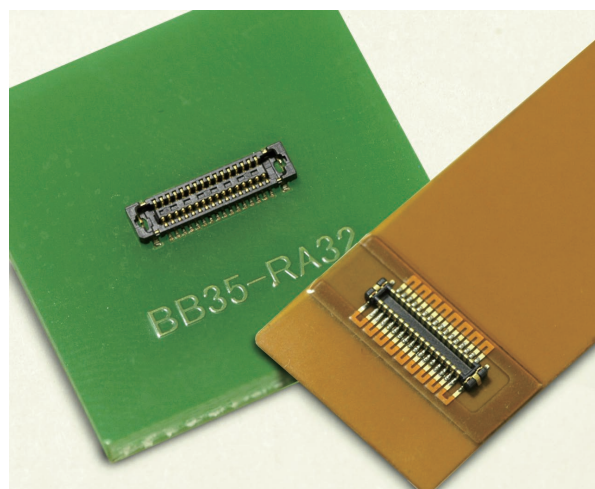
SPECIFICATIONS

Rated Voltage	50V AC(r.m.s.) / 50V DC
Rated Current	0.2A : Signal Contact 1.5A : Power Contact (Locking tab)
Insulation Resistance	1,000 MΩ min. at 250 V DC
Dielectric Withstand Voltage	200V AC(r.m.s.) / 1 minute
Contact Resistance	50 mΩ max. Signal Contact 20 mΩ max. Power Contact (Locking tab)
Operating Temperature	-40°C ~ +85°C

MATERIAL / FINISH



Item	Material / Finish
Signal Contact	Copper Alloy / Au over Ni Plating
Housing	LCP Resin(UL94V-0) / Black
Power Contact (Locking tab)	Copper Alloy / Au over Ni Plating



▶ 0.35mm pitch Board-to-Board Connector

Plug Connector

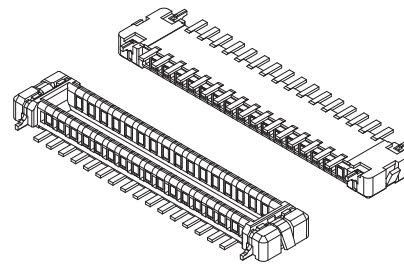
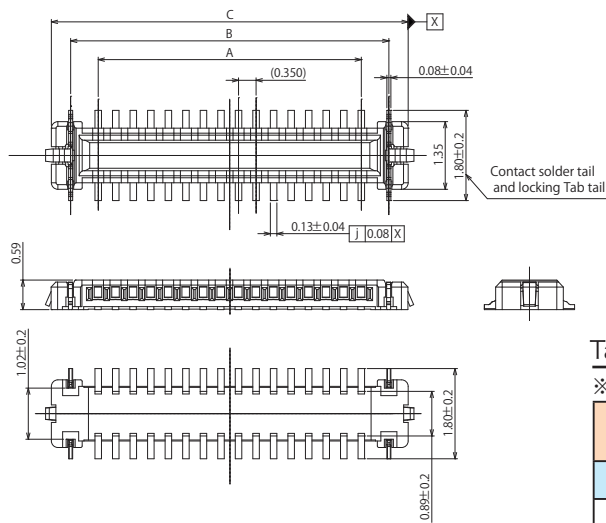
BB35 - PB 32-3A

Series Name
BB35 : 0.35mm pitch board-to-board connector
Stacking Height 0.7mm

Mating Style
P : Plug

Contact Plating
3 : Au (Flash) over Ni Plating

Number of Contact
See Table-1

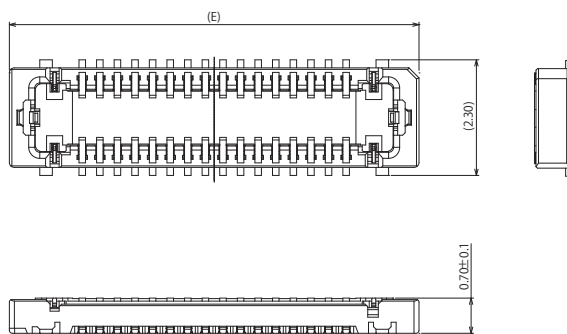


Solid View
(Number of contact is 32)

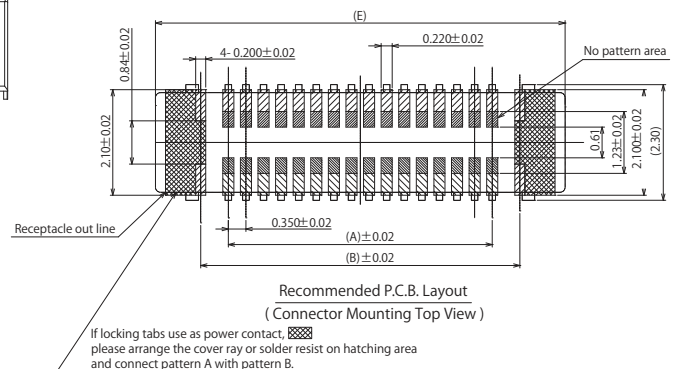
Table-1

※ Regarding the number of contact, please contact our sales.

Part Number	Number of Contact	A	B	C	(E)
BB4-PB10-3A	10	1.40	2.50	3.26	4.30
BB4-PB12-3A	12	1.75	2.85	3.61	4.65
BB4-PB14-3A	14	2.10	3.20	3.96	5.00
BB4-PB16-3A	16	2.45	3.55	4.31	5.35
BB4-PB18-3A	18	2.80	3.90	4.66	5.70
BB4-PB20-3A	20	3.15	4.25	5.01	6.05
BB4-PB22-3A	22	3.50	4.60	5.36	6.40
BB4-PB24-3A	24	3.85	4.95	5.71	6.75
BB4-PB26-3A	26	4.20	5.30	6.06	7.10
BB4-PB28-3A	28	4.55	5.65	6.41	7.45
BB4-PB30-3A	30	4.90	6.00	6.76	7.80
BB4-PB32-3A	32	5.25	6.35	7.11	8.15
BB4-PB42-3A	42	7.00	8.10	8.86	9.90



Connector mating condition



▶ 0.35mm pitch Board-to-Board Connector

Receptacle Connector

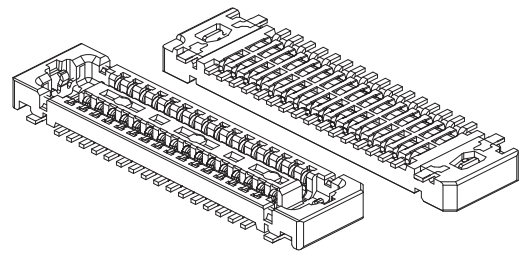
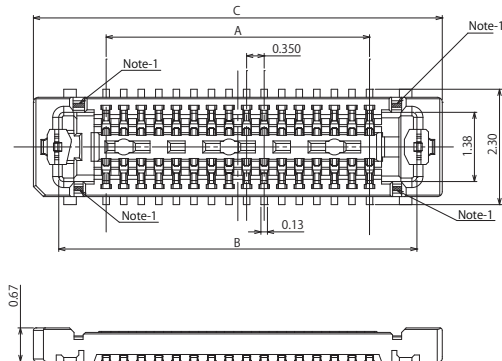
BB35 - RB 32-3A

Series Name
BB35 : 0.35mm pitch board-to-board connector
Stacking Height 0.7mm

Mating Style
R : Receptacle

Contact Plating
3 : Au (Flash) over Ni Plating

Number of Contact
See Table-2

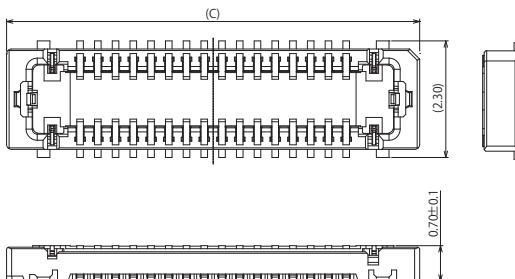


Solid View
(Number of contact is 32)

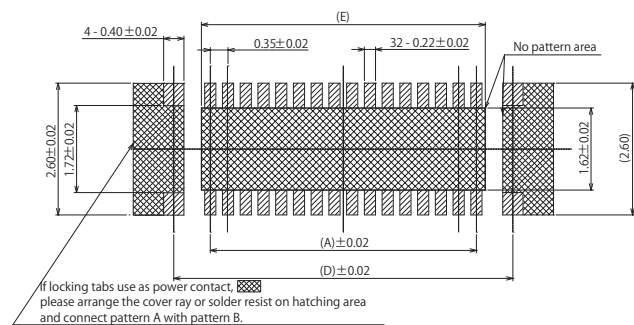
Table-2

※ Regarding the number of contact, please contact our sales.

Part Number	Number of Contact	A	B	C	D	E	F
BB4-RB10-3A	10	1.40	3.29	4.30	2.84	1.75	3.50
BB4-RB12-3A	12	1.75	3.64	4.65	3.19	2.10	3.85
BB4-RB14-3A	14	2.10	3.99	5.00	3.54	2.45	4.20
BB4-RB16-3A	16	2.45	4.34	5.35	3.89	2.80	4.55
BB4-RB18-3A	18	2.80	4.69	5.70	4.24	3.15	4.90
BB4-RB20-3A	20	3.15	5.04	6.05	4.59	3.50	5.25
BB4-RB22-3A	22	3.50	5.39	6.40	4.94	3.85	5.60
BB4-RB24-3A	24	3.85	5.74	6.75	5.29	4.20	5.95
BB4-RB26-3A	26	4.20	6.09	7.10	5.64	4.55	6.30
BB4-RB28-3A	28	4.55	6.44	7.45	5.99	4.90	6.65
BB4-RB30-3A	30	4.90	6.79	7.80	6.34	5.25	7.00
BB4-RB32-3A	32	5.25	7.14	8.15	6.69	5.60	7.35
BB4-RB42-3A	42	7.00	8.89	9.90	8.44	7.35	9.10



Connector mating condition



Recommended P.C.B. Layout
(Connector Mounting Top View)