

CRYSTEK
MICROWAVE
A DIVISION OF CRYSTEK CORPORATION

Low Pass Filter
50Ω SMA
7th Order



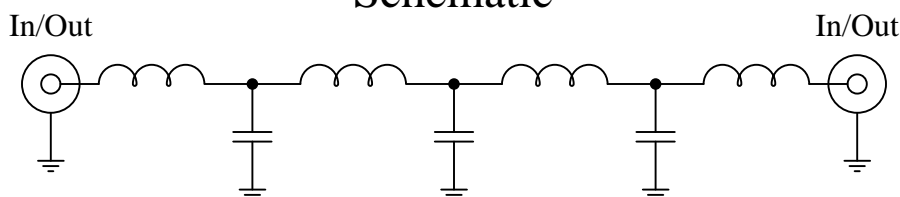
Part Number: CLPFL-0400

Low Pass Range
DC to 400MHz

New
Low Pass Filters



Schematic



Features:

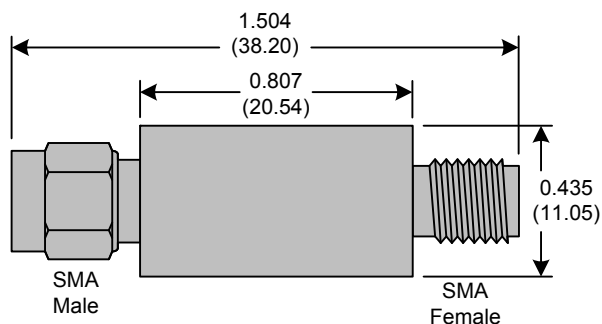
- 7th Order Butterworth Response
- 50Ω SMA Connectors

Applications:

- Test Equipment
- Lab Use

Maximum Ratings:

- +36dBm (4 Watts)
- Operating Temperature: -40°C to 85°C
- Storage Temperature: -55°C to 100°C

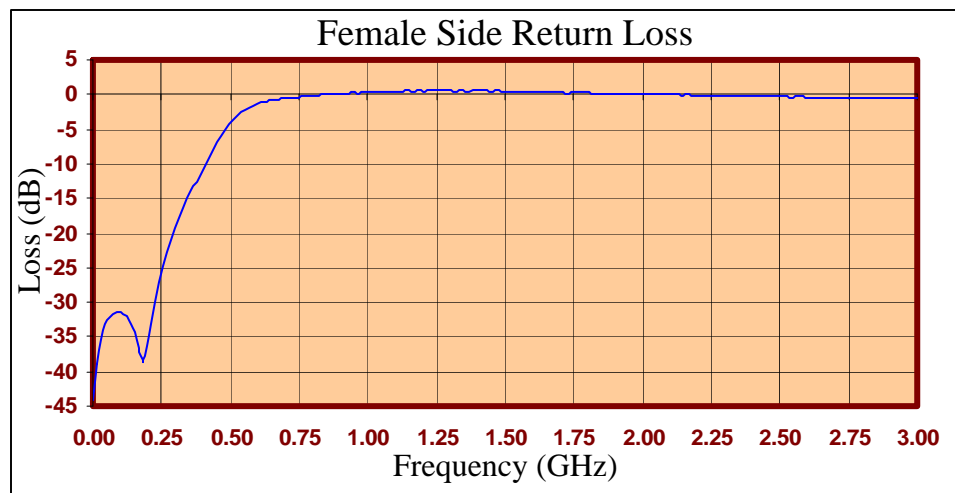
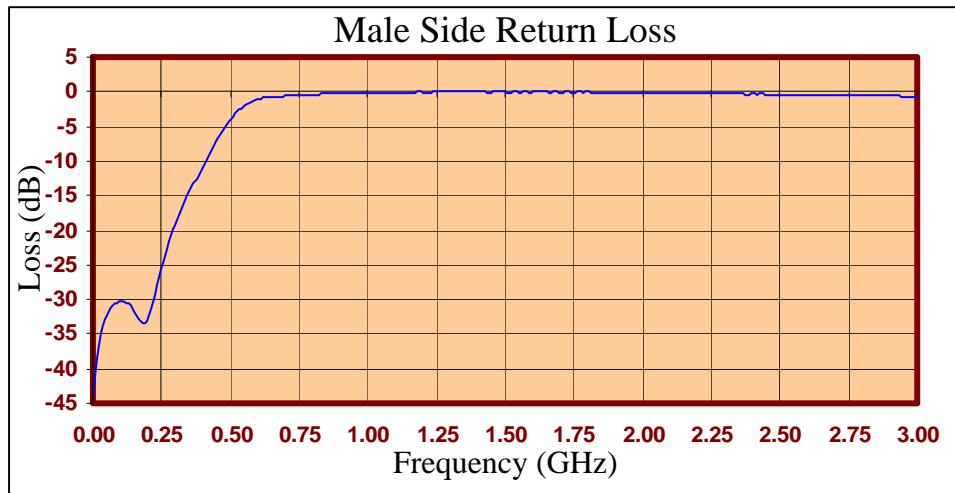
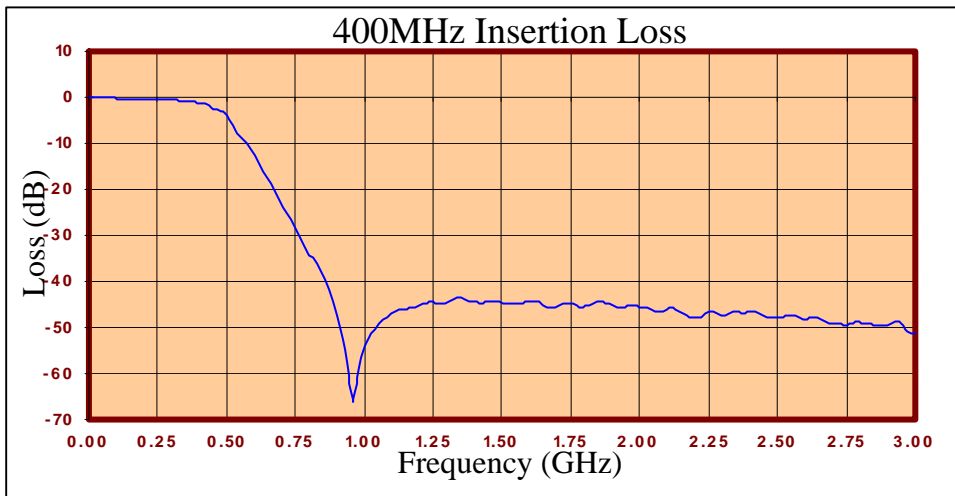


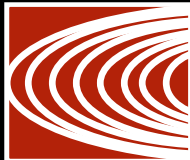
Crystek's new line of Low Pass Filters are designed in a rugged SMA housing. This filter line has excellent out-of-band rejection. Designed for Test Equipment and General Lab Use.



CRYSTEK
CORPORATION

12730 COMMONWEALTH DRIVE • FORT MYERS, FLORIDA 33913
PHONE: 239-561-3311 • 800-239-5611 • www.DataSheet4U.com
FAX: 239-561-1025 • WWW.CRYSTEK.COM





FREQ (MHz)	INSERTION LOSS (dB)	Male Return Loss (dB)	Female Return Loss (dB)
0.3	-0.07	-43.80	-44.12
15.3	-0.07	-38.55	-39.01
30.3	-0.14	-35.01	-35.40
45.3	-0.15	-32.87	-33.19
60.3	-0.16	-31.63	-32.28
75.3	-0.20	-30.87	-31.57
90.3	-0.19	-30.52	-31.32
105	-0.24	-30.34	-31.47
120	-0.25	-30.59	-32.13
135	-0.27	-30.84	-33.11
150	-0.30	-31.93	-34.43
165	-0.29	-32.78	-36.50
180	-0.32	-33.36	-38.72
195	-0.37	-33.01	-36.22
210	-0.34	-31.48	-33.14
225	-0.42	-29.34	-29.94
240	-0.39	-26.83	-27.23
255	-0.42	-24.65	-24.73
270	-0.49	-22.65	-22.76
285	-0.54	-20.83	-20.90
300	-0.59	-19.21	-19.21
330	-0.65	-16.30	-16.34
405	-1.27	-10.20	-10.29
450	-2.41	-6.98	-6.99
510	-4.63	-3.54	-3.60
585	-11.28	-1.39	-1.56
705	-23.76	-0.54	-0.57
810	-34.75	-0.39	-0.15
900	-47.49	-0.21	0.00
1005	-54.08	-0.21	0.00
1245	-44.51	-0.04	0.00
1500	-44.63	-0.04	0.00
1755	-44.87	-0.09	-0.01
1995	-45.47	-0.16	-0.09
2250	-46.52	-0.25	-0.15
2505	-47.82	-0.38	-0.33
2745	-49.36	-0.55	-0.43
3000	-51.18	-0.67	-0.54

Product Control:

Crystek Part Number:	CLPFL-0400	Release Date:	30-Mar-10
Revision Level:	A	Responsible:	K. Piotrowicz

