

**EAT•N**

**Powerware**

[www.datasheet4u.com](http://www.datasheet4u.com)

## Intelligent Power Control™ IPC34XX-NET Series

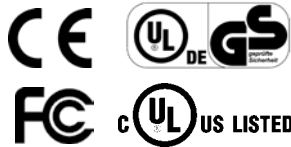


**Enclosure Power Distribution Units (ePDU™)**

[www.DataSheet4U.com](http://www.DataSheet4U.com)



Front



IPC3401-NET Rear

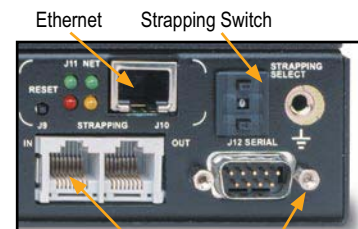


IPC3402-NET Rear

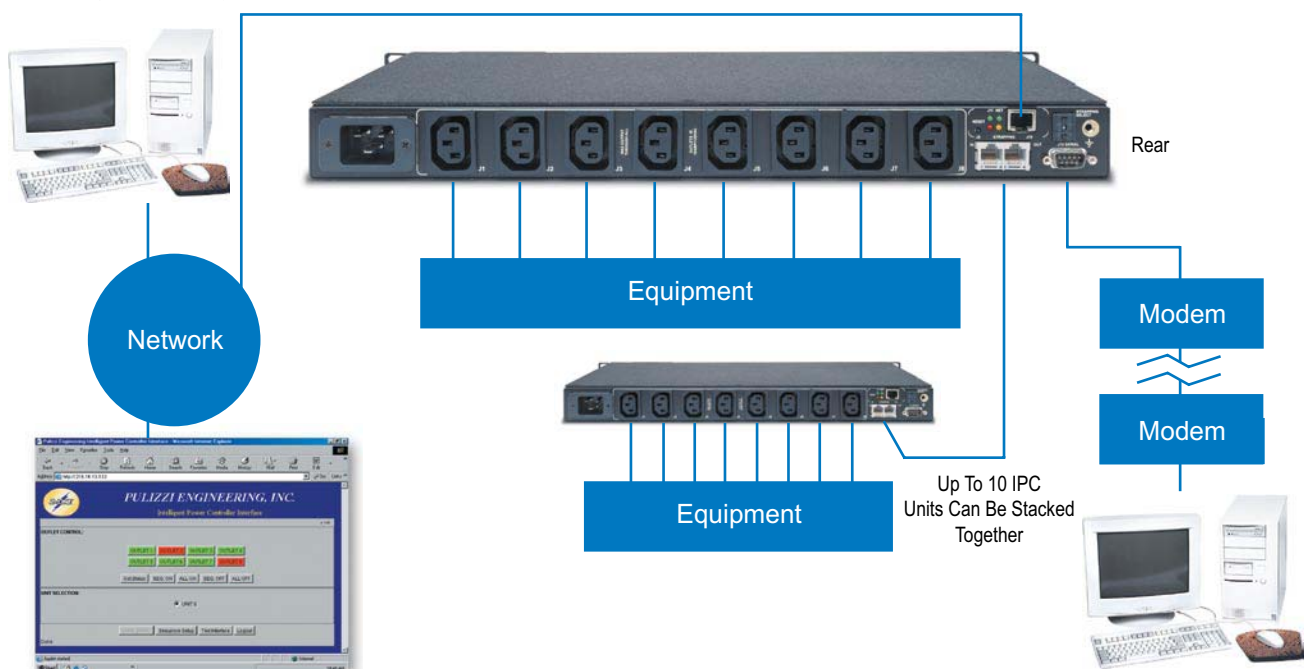


IPC3402-2756 Rear

- **Remote access via WAN/LAN, TCP/IP, Modem, or Direct RS-232:**  
Prevent costly site visits with remote-reboot and power management.
- **Sequence power up and down with Pulizzi's® patented Multiple Time Delay™ circuitry:**  
Prevent inrush current problems such as system lock-ups and automatically control the order in which equipment within your network powers up or down.
- **Strap up to 10 IPC34XX systems together for control of 80 outlets:**  
Use one IPC34XX-NET unit as the main system and strap (nine) less expensive IPC34XX (non-NET) units together to save money and increase overall control of your network equipment.
- **100-240VAC / 15A or 20A input (IPC3401 or IPC3401-NET):**  
One unit to purchase, stock and utilize worldwide.
- **Remote access disable and Local on/off control:**  
When you need to work locally with the IPC34XX systems, the push of a button will prevent anyone from coming in remotely and the individual outlet on/off switches are also located on the front panel.
- **Cross platform compatible with Telnet and Browser Control:**  
You can easily access and control the IPC34XX with either PC, Mac, Linux or Unix platforms running Telnet or via your web browser.



RS485 Strapping Connectors  
RS232 Serial (DB9 Connector)



**CHASSIS**

- 19" x 1.72" (1U) x 9.5"
- Weight approximately 12 lbs. (IPC3401 & 02)
- Weight approximately 15 lbs. (IPC3402-2756 & IPC2930)
- Detachable mounting brackets allow for several mounting options

**NEMA or IEC 320 OUTLETS**

- IPC3401 has 8 IEC 60320 Type C13
  - Rated by UL/CSA 125V~/15A
  - Rated by UL/CSA/VDE 250V~/10A
- IPC3402 has 8 NEMA 5-15R
- IPC3402-A2 has 8 NEMA 5-20R
- IPC3402-2756 has 4 NEMA 5-20R and 4 NEMA 5-15R
- IPC3402-2930 has 8 NEMA 5-15R

**(11) INDICATOR LIGHTS**

- Main power to system-CB "on"
- Individual power "on" to outlets 1-8
- Data acquisition and remote disable

**REMOTE or LOCAL CONTROL**

- Serial RS232 port (DB9 Male) for direct computer or modem connection
- RS485 input/output for strapping up to 10 systems together over CAT.5 cable
- Local: one on/off switch for each outlet
- -NET SYSTEMS ONLY: RJ45 for network connections (Ethernet)

**REMOTE DISABLE**

- With the push of a button, disable remote access to the IPC when needed

**POWER SUPPLY**

- The IPC3401 series features a full range power supply for operation at 100-240VAC input/output

**BAUD RATE**

- Default: 9600 baud

**EMI/RFI FILTERING**

- Common Mode - Line to Ground
- Differential Mode - Line to Line
- Filtered inlet isolates noise before entering the system
- IPC3402-2756 and IPC3402-2930 do not have filtering

**SPIKE/SURGE SUPPRESSION (TVSS)**

- Line to Line
- Multi-stage, both MOVs and SAPs

**BRANCH CIRCUIT PROTECTION**

- UL498 Listed Main Disconnect Breaker and guard, with a long time delay curve provides manual on/off switching and trips in an overload condition

**POWER INPUT**

- IEC 60320 Type C20 EMI/RFI Filtered Inlet
- Mating power cables must be ordered separately
- IPC3402-2756: attached 10' cable and NEMA L5-30P

**OUTLET STATUS**

- Query the IPC for Outlet and Watch Dog status, i.e. outlets are "on" or "off"

**STRAPPING**

- Strapping allows up to 10 IPCs (80 outlets) to be controlled at one address
- Units are connected together via the RS485 "IN" and "OUT" connectors

**UNIT NAME / PASSWORD**

- The IPC comes with a default name @@@@, which can be changed to any four alphanumeric characters
- Optional 3 character password

**MULTIPLE TIME DELAY™ (MTD™)**

- Sequence power up and power down to outlets with a one second time delay (factory set)
- User Programmable:
  - Set power "on" sequence to any combination of outlets
  - Set the MTD™ timing from 1 second to 999 seconds, i.e. 009 = 9 seconds

**AUTO-EVENT COMMAND RESPONSE**

- The IPC will automatically update the status of outlets ("on" or "off") via serial or telnet

**SOFTWARE CONTROLS**

- Multi-platform compatible
- Control via Terminal Emulation Software
- Web interface for browser control

**COMMANDS AVAILABLE**

- All outlets on/off
- Specific outlets on/off
- Set up and Sequence on/off all outlets
- Create password and unit address
- Outlet naming (8 characters)
- Set up, enable or disable Watchdog
- Display outlet and Watchdog Timer status
- Automatically receive update outlet status whenever there's a change
- Auto-reboot outlet 1 with a five second delay on restart

SPECIFICATIONS:	IPC3401	IPC3401-NET	IPC3402	IPC3402-NET	IPC3402-A2	IPC3402-A2-NET	IPC3402-2756	IPC3402-2930
Approvals	UL/cUL, CE, GS, FCC		UL/cUL, FCC	UL/cUL, FCC	UL/cUL, FCC	UL/cUL, FCC	UL/cUL	UL/cUL
Voltage (50/60Hz)	100-240V~	100-240V~	120V~	120V~	120V~	120V~	120V~	120V~
Current Input	20A @ 120V~ 16A @ 240V~	20A @ 120V~ 16A @ 240V~	20A	20A	20A	20A	30A	30A
Current Output	16A	16A	16A	16A	16A	16A	24A	24A
Full Load VA	1920VA @ 120V~ 3840VA @ 240V~	1920VA @ 120V~ 3840VA @ 240V~	1920VA	1920VA	1920VA	1920VA	2880VA	2880VA
Outlets (IEC or NEMA)	Type C13	Type C13	5-15R	5-15R	5-20R	5-20R	(4) 5-20R, (4) 5-15R	(8) 5-15R
Circuit Breaker	20/20A	20/20A	20A	20A	20A	20A	20/10A	20/10A
EMI/RFI Filter	20A	20A	20A	20A	20A	20A	N/A	N/A
Surge Suppression	270V	270V	270V	270V	270V	270V	270V	270V
Power Input	Type C20 Inlet	Type C20 Inlet	Type C20 Inlet	Type C20 Inlet	Type C20 Inlet	Type C20 Inlet	L5-30P	L5-30P
Power Cord	Power cables must be ordered separately.						10/3AWG 10'	10/3AWG 10'
Ethernet Control	NO	YES	NO	YES	NO	YES	YES	YES
Serial Control (RS232)	YES	YES	YES	YES	YES	YES	YES	YES

TVSS (Transient Voltage Surge Suppression)  
MOV SPECIFICATIONS

Continuous AC Voltage	150VAC	270VAC	320VAC
Continuous DC Voltage	200VDC	360VDC	420VDC
Max. DC Leakage	200μA	200μA	200μA
Low Varistor Voltage Limit	212VDC	389VDC	462VDC
High Varistor Voltage Limit	243VDC	453VDC	540VDC
Nominal Varistor Voltage	236VDC	424VDC	503VDC
Current For Varistor Voltage	1mA	1mA	1mA
Max. Clamp Voltage 8x20μs	360V	680V	810V
Max. Clamp Voltage Test Current	100A	100A	100A
Peak Current Rating (1 Pulse)	12000A	10000A	10000A
Peak Current Rating (2 Pulse)	9000A	6500A	6500A
Energy Rating (10x1000μs)	170J	325J	385J
Energy Rating (8x20μs)	170J	325J	385J
Capacitance	1700pF	970pF	820pF
Impulse Response Time	50ns	50ns	50ns

## EMI/RFI FILTERING COMMON MODE INSERTION LOSS

Mhz.	.01	1	10	20	50	100
dB.	8	29	40	50	68	40

## DIFFERENTIAL INSERTION LOSS

Mhz.	.01	1	10	20	50	100
dB.	8	23	45	58	32	28

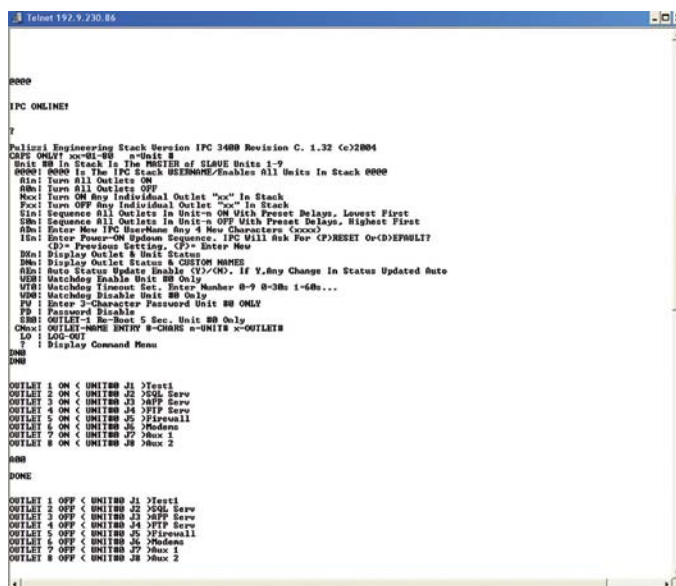
## Environmental

Operating Temperature is 0 to 50 C

Storage Temperature is -40 to 70 C

Altitude Maximum 10,000 ft.

Relative Humidity is 95% Max Non-Condensing

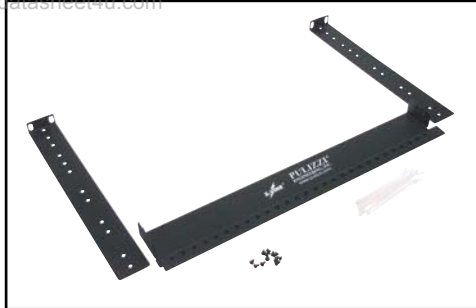




## Accessories

### Optional Cable Restraint and Management

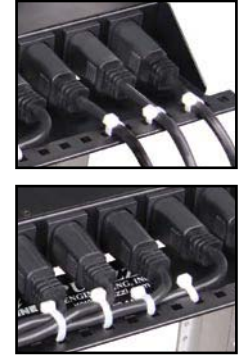
www.datasheet4u.com



KIT-CABLRES-01

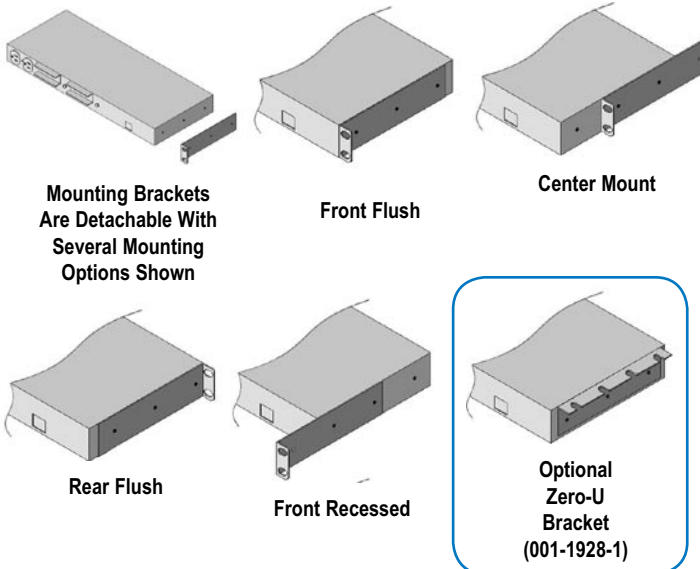


TRANSVERSE MOUNTING

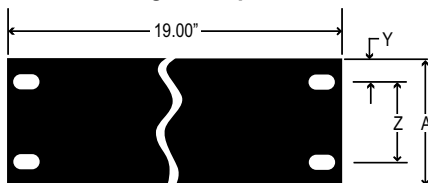


- Prevent downtime and accidental disconnection
- Secure cables/plugs to Power Distribution Unit
- Cable ties provide highest level of retention

### Adjustable Mounting Options



Rack Mounting Hole Specification Table



HOLE SPECIFICATION TABLE

A	Y	Z
1.75	.25	1.25

010-9334:  
C19 to NEMA 5-15P  
125V, 15A Straight Blade  
8 foot, 14AWG/3wire



010-9335:  
C19 to NEMA 5-20P  
125V, 20A Straight Blade  
8 foot, 12AWG/3wire



010-9339:  
C19 to NEMA L5-20P  
125V, 20A Twist-Lock  
8 foot, 12AWG/3wire



010-9341:  
C19 to NEMA L6-20P  
250V, 20A Twist-Lock  
8 foot, 12AWG/3wire



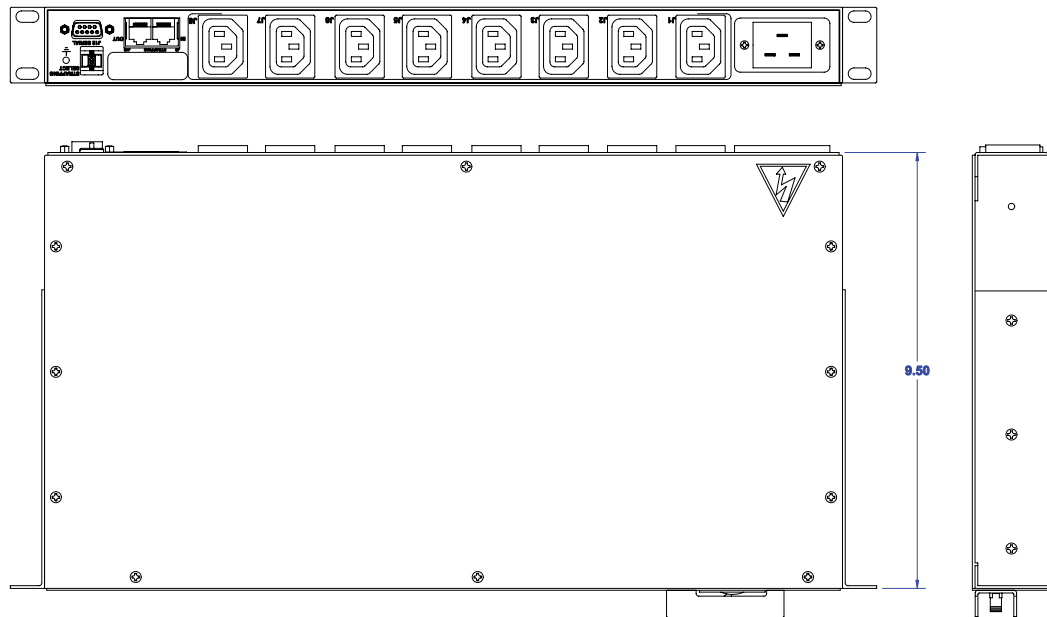
010-9343:  
CEE7-7 to C19  
250V, 16A EUROPE (Schuko)  
2.5M, 1.5mm/3wire Harmonized



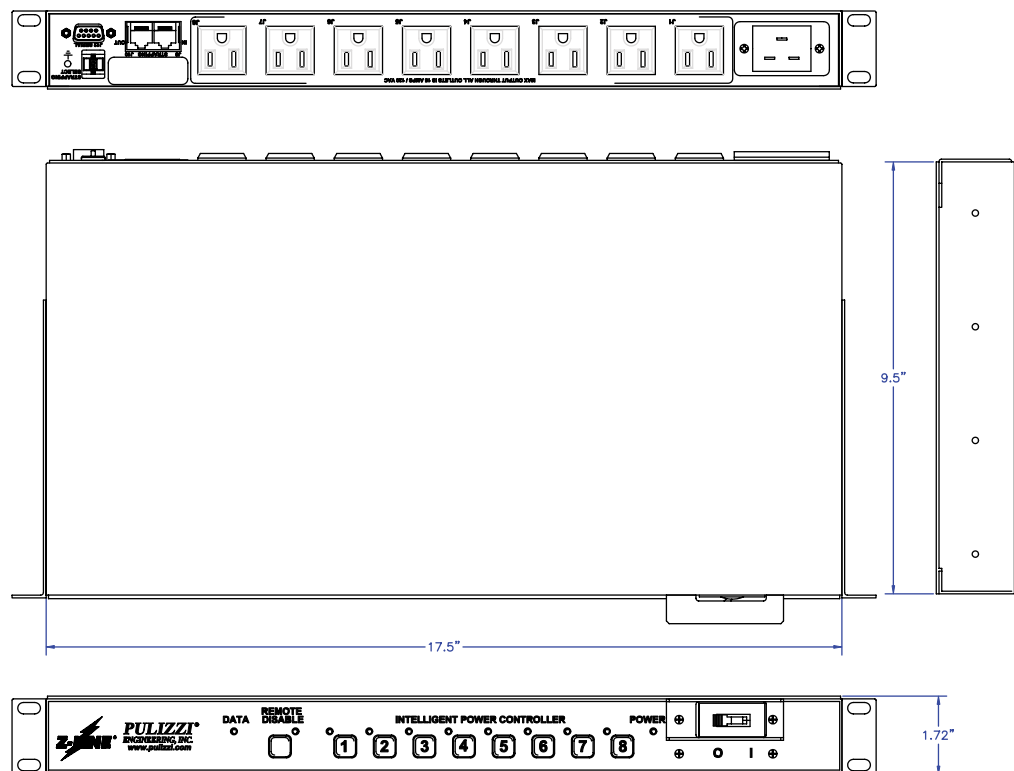
010-0025: 8 foot  
C13 to C14 Harmonized, 1mm/3wire  
100-240V rated



Drawings are  
not shown to scale  
Dimensions  
are in inches  
[www.datasheet4u.com](http://www.datasheet4u.com)



IPC3401



IPC3402