

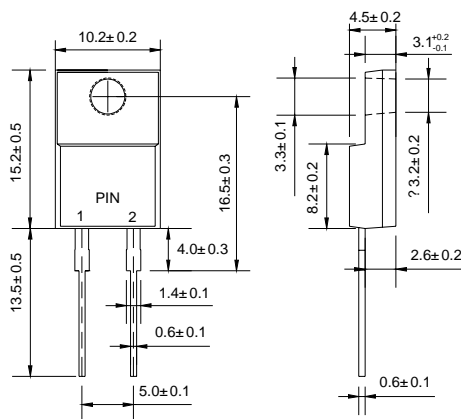
### ITO-220AC

## Features

- ◇ Low cost
- ◇ Low leakage
- ◇ Low forward voltage drop
- ◇ High current capability
- ◇ Easily cleaned with alcohol, Isopropanol and similar solvents
- ◇ The plastic material carries U/L recognition 94V-0

## Mechanical Data

- ◇ Case: JEDEC ITO-220AC, molded plastic
- ◇ Polarity: As marked
- ◇ Weight: 0.064 ounces, 1.81 gram
- ◇ Mounting position: Any



Dimensions in millimeters

## MAXIMUM RATINGS AND ELECTRICAL CHARACTERISTICS

Ratings at 25°C ambient temperature unless otherwise specified.

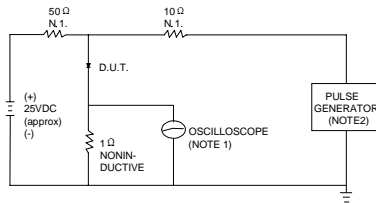
Single phase, half wave, 60 Hz, resistive or inductive load. For capacitive load, derate by 20%.

		MUR 1005F	MUR 1010F	MUR 1015F	MUR 1020F	MUR 1040F	MUR 1060F	UNITS
Maximum recurrent peak reverse voltage	V <sub>RRM</sub>	50	100	150	200	400	600	V
Maximum RMS voltage	V <sub>RMS</sub>	35	70	105	140	280	420	V
Maximum DC blocking voltage	V <sub>DC</sub>	50	100	150	200	400	600	V
Maximum average forw ard rectified current @T <sub>C</sub> =100°C	I <sub>F(AV)</sub>	10						A
Peak forw ard surge current 8.3ms single half-sine-w ave superimposed on rated load @T <sub>J</sub> =125°C	I <sub>FSM</sub>	125						A
Maximum instantaneous forw ard voltage @ 10A	V <sub>F</sub>	0.975				1.3	1.5	V
Maximum reverse current @T <sub>A</sub> =25°C at rated DC blocking voltage @T <sub>A</sub> =125°C	I <sub>R</sub>	5.0 250				10.0 500		μ A
Maximum reverse recovery time (Note1)	t <sub>rr</sub>	25				50		ns
Operating junction temperature range	T <sub>J</sub>	- 55 ----- + 150						°C
Storage temperature range	T <sub>STG</sub>	- 55 ----- + 150						°C

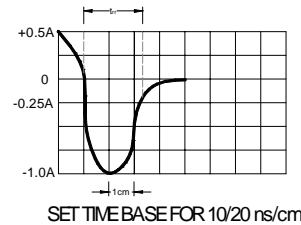
NOTE: 1. Measured with  $I_F=0.5\text{A}$ ,  $I_R=1\text{A}$ ,  $I_{rr}=0.25\text{A}$ .

## Ratings AND Characteristic Curves

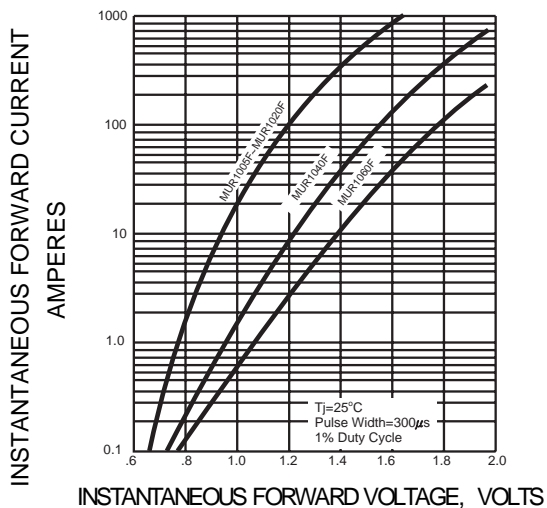
**FIG.1 – TEST CIRCUIT DIAGRAM AND REVERSE RECOVERY TIME CHARACTERISTIC**



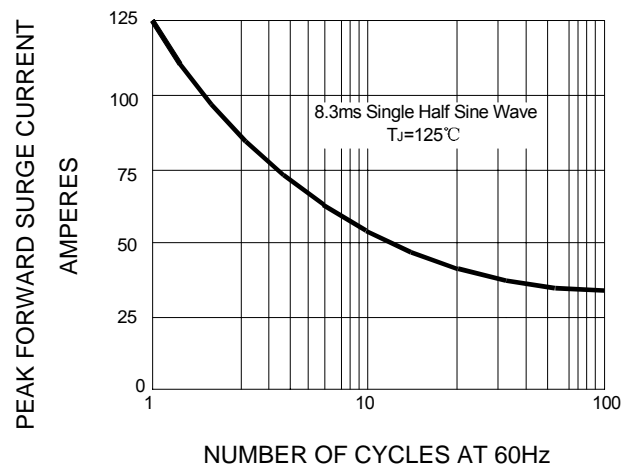
NOTES: 1. RISE TIME = 7ns MAX INPUT IMPEDANCE = 1MΩ, 22pF.  
2. RISE TIME = 10ns MAX SOURCE IMPEDANCE = 50 Ω.



**FIG.2 – TYPICAL FORWARD CHARACTERISTIC**



**FIG.3 – PEAK FORWARD SURGE CURRENT**



**FIG.4-FORWARD DERATING CURVE**

